

MT-ND3 Rabbit pAb

货号: **AYP15701**

产品信息

反应	Human,Mouse,Rat
宿主	Rabbit
克隆性	Polyclonal
预测反应	
应用	WB
推荐浓度	WB: 1:500 - 1:2000
理论分子量	13kDa
实测分子量	13kDa
形式	Liquid
保存条件	Store at -20°C. Avoid freeze / thaw cycles. Buffer: PBS with 0.02% sodium azide,50% glycerol,pH7.3.
偶联物	Unconjugated
阳性对照	HepG2,293T,HeLa,PC-12,Mouse liver,Rat liver
细胞定位	Mitochondrion membrane,Multi-pass membrane protein
纯化	Affinity purification

抗原信息

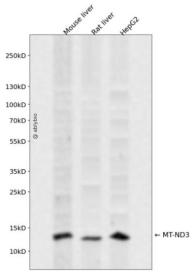
抗原信息	A synthetic peptide corresponding to a sequence within amino acids 1-100 of mouse MT-ND3 (NP_904335.1).
序列	MNLYTVIFINILLSLTLILVAFWLPQMNLSEKANPYECGFDPSTSSARLPFSMKFFLVAITFLLFDLEIALLLPLPWAIQTIKTSTM MIMAFILVTILSL

靶点信息

研究背景	Predicted to enable NADH dehydrogenase (ubiquinone) activity. Predicted to be involved in cellular response to glucocorticoid stimulus; mitochondrial electron transport, NADH to ubiquinone; and response to oxidative stress. Located in mitochondrion. Is expressed in several structures, including alimentary system; brain; genitourinary system; hemolymphoid system gland; and liver and biliary system. Human ortholog(s) of this gene implicated in Leber hereditary optic neuropathy; Leigh disease; and Parkinson's disease. Orthologous to human MT-ND3 (mitochondrially encoded NADH:ubiquinone oxidoreductase core subunit 3).
------	---

基因ID	17718
基因名	
Swiss	
别名	MT-ND3;MTND3;ND3

产品验证



Western blot analysis of MT-ND3 expressed in Mouse liver,Rat liver,HepG2 using MT-ND3 Rabbit pAb at 1:1000. Secondary antibody: HRP Goat Anti-Rabbit IgG (H+L) at 1:5000. Lysates/proteins: 30ug per lane. Blocking buffer: 5% non-fat dry milk in TBST. Detection: ECL Enhanced Kit. Exposure time: 120s.

实验步骤

访问官网浏览详情: www.ablybio.cn