

# MT-CO3 Rabbit pAb

货号: **AYP15700**

## 产品信息

反应	Mouse,Rat
宿主	Rabbit
克隆性	Polyclonal
预测反应	
应用	WB
推荐浓度	<b>WB:</b> 1:500 - 1:2000
理论分子量	29kDa
实测分子量	30kDa
形式	Liquid
保存条件	Store at -20°C. Avoid freeze / thaw cycles. Buffer: PBS with 0.02% sodium azide,50% glycerol,pH7.3.
偶联物	Unconjugated
阳性对照	Mouse liver,Rat liver
细胞定位	Mitochondrion inner membrane,Multi-pass membrane protein
纯化	Affinity purification

## 抗原信息

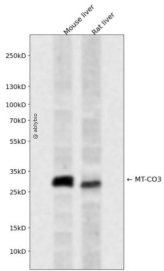
抗原信息	A synthetic peptide corresponding to a sequence within amino acids 1-100 of mouse MT-CO3 (NP_904334.1).
序列	MTHQTHAYHVMNPSWPLTGAFSALLLSGLVMWFHYSITLLTLGLLTNILMYQWWRDVIREGTYQGHHTPIVQKGLR YGMILFIVSEVFFFAGFFWA

## 靶点信息

研究背景	Predicted to enable electron transfer activity and oxidoreduction-driven active transmembrane transporter activity. Predicted to be involved in mitochondrial electron transport, cytochrome c to oxygen and respiratory chain complex IV assembly. Located in mitochondrion. Is expressed in several structures, including alimentary system; brain; heart; integumental system; and sensory organ. Human ortholog(s) of this gene implicated in MELAS syndrome. Orthologous to human MT-CO3 (mitochondrially encoded cytochrome c oxidase III).
------	---

基因ID	17710
基因名	
Swiss	
别名	MT-CO3;COIII;MTCO3;COX3

## 产品验证



Western blot analysis of MT-CO3 expressed in Mouse liver,Rat liver using MT-CO3 Rabbit pAb at 1:1000. Secondary antibody: HRP Goat Anti-Rabbit IgG (H+L) at 1:5000. Lysates/proteins: 30ug per lane. Blocking buffer: 5% non-fat dry milk in TBST. Detection: ECL Enhanced Kit. Exposure time: 120s.

## 实验步骤

访问官网浏览详情: [www.ablybio.cn](http://www.ablybio.cn)