

# SERPINB6 Rabbit pAb

货号: **AYP15699**

## 产品信息

反应	Human,Mouse,Rat
宿主	Rabbit
克隆性	Polyclonal
预测反应	
应用	WB
推荐浓度	<b>WB:</b> 1:500 - 1:1000
理论分子量	42kDa
实测分子量	42KDa
形式	Liquid
保存条件	Store at -20°C. Avoid freeze / thaw cycles. Buffer: PBS with 0.02% sodium azide,50% glycerol,pH7.3.
偶联物	Unconjugated
阳性对照	HeLa,Mouse liver,Rat liver
细胞定位	Cytoplasm
纯化	Affinity purification

## 抗原信息

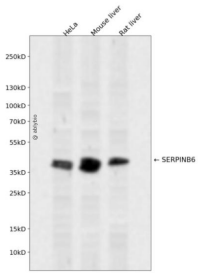
抗原信息	Recombinant fusion protein containing a sequence corresponding to amino acids 180-300 of human SERP INB6 (NP_004559.4).
序列	ENTEERLFKVKSKNEEKPVQMMFKQSTFKKTYIGEFTQILVLPYVGKELNMIIMLPDETTDLRTVEKELTYEKFVEWTRLDMMD DEEEVEVSLPRFKLEESYDMESVLRNLGMTDAFELGKA

## 靶点信息

研究背景	The protein encoded by this gene is a member of the serpin (serine proteinase inhibitor) superfamily, and ovalbumin(ov)-serpin subfamily. It was originally discovered as a placental thrombin inhibitor. The mouse homolog was found to be expressed in the hair cells of the inner ear. Mutations in this gene are associated with nonsyndromic progressive hearing loss, suggesting that this serpin plays an important role in the inner ear in the protection against leakage of lysosomal content during stress, and that loss of this protection results in cell death and sensorineural hearing loss. Alternatively spliced transcript variants have been found for this gene.
------	--

基因ID	5269
基因名	SERPINB6
Swiss	P35237
别名	SERPINB6;CAP;DFNB91;MSTP057;PI-6;PI6;PTI;SPI3;serpin B6

## 产品验证



Western blot analysis of SERPINB6 expressed in HeLa, Mouse liver, Rat liver using SERPINB6 Rabbit pAb at 1:1000. Secondary antibody: HRP Goat Anti-Rabbit IgG (H+L) at 1:5000. Lysates/proteins: 30ug per lane. Blocking buffer: 5% non-fat dry milk in TBST. Detection: ECL Enhanced Kit. Exposure time: 120s.

## 实验步骤

访问官网浏览详情: [www.ablybio.cn](http://www.ablybio.cn)