

# PSMB3 Rabbit pAb

货号: **AYP15696**

## 产品信息

反应	Human,Mouse,Rat
宿主	Rabbit
克隆性	Polyclonal
预测反应	
应用	WB IHC IF/ICC
推荐浓度	<b>WB:</b> 1:500 - 1:2000 <b>IHC:</b> 1:50 - 1:200 <b>IF/ICC:</b> 1:50 - 1:100
理论分子量	22kDa
实测分子量	23kDa
形式	Liquid
保存条件	Store at -20°C. Avoid freeze / thaw cycles. Buffer: PBS with 0.02% sodium azide,50% glycerol,pH7.3.
偶联物	Unconjugated
阳性对照	NIH/3T3,MCF7,HeLa,Jurkat,Mouse brain,Rat liver,Rat brain
细胞定位	Cytoplasm,Nucleus
纯化	Affinity purification

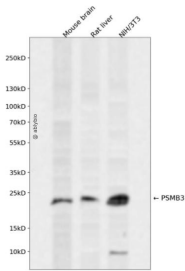
## 抗原信息

抗原信息	Recombinant fusion protein containing a sequence corresponding to amino acids 1-205 of human PSMB3 (NP_002786.2).
序列	MSIMSYNGGAVMAMKGNKNCVAIAADRRFGIQAQMVTTFQKIFPMGDRLYIGLAGLATDVQTVARLKFRLNLYELKEGR QIKPYTLMSMVANLLYEKRFPGYYTEPVIAGLDPKTFKPFICSLDLIGCPMVTDDFVVSGETCAEQMYGMCESLWEPNMDPD HLFETISQAMLNAVDRDAVSGMGVIVHIEKDKITTRTLKARMD

## 靶点信息

研究背景	The proteasome is a multicatalytic proteinase complex with a highly ordered ring-shaped 20S core structure. The core structure is composed of 4 rings of 28 non-identical subunits; 2 rings are composed of 7 alpha subunits and 2 rings are composed of 7 beta subunits. Proteasomes are distributed throughout eukaryotic cells at a high concentration and cleave peptides in an ATP/ubiquitin-dependent process in a non-lysosomal pathway. An essential function of a modified proteasome, the immunoproteasome, is the processing of class I MHC peptides. This gene encodes a member of the proteasome B-type family, also known as the T1B family, that is a 20S core beta subunit. The 26 S proteasome may be involved in trinucleotide repeat expansion, a phenomenon which is associated with many hereditary neurological diseases. Pseudogenes have been identified on chromosomes 2 and 12. Alternative splicing results in multiple transcript variants
基因ID	5691
基因名	PSMB3
Swiss	P49720
别名	PSMB3;HC10-II

## 产品验证



Western blot analysis of PSMB3 expressed in Mouse brain, Rat liver, NIH/3T3 using PSMB3 Rabbit pAb at 1:1000. Secondary antibody: HRP Goat Anti-Rabbit IgG (H+L) at 1:5000. Lysates/proteins: 30ug per lane. Blocking buffer: 5% non-fat dry milk in TBST. Detection: ECL Enhanced Kit. Exposure time: 120s.

## 实验步骤

访问官网浏览详情: [www.ablybio.cn](http://www.ablybio.cn)