

RALY Rabbit pAb

货号: **AYP15695**

产品信息

反应	Human,Mouse,Rat
宿主	Rabbit
克隆性	Polyclonal
预测反应	
应用	WB
推荐浓度	WB: 1:500 - 1:1000
理论分子量	30kDa/32kDa
实测分子量	38kDa
形式	Liquid
保存条件	Store at -20°C. Avoid freeze / thaw cycles. Buffer: PBS with 0.01% thiomersal,50% glycerol,pH7.3.
偶联物	Unconjugated
阳性对照	HepG2,HeLa,Mouse lung,Rat kidney
细胞定位	Nucleus
纯化	Affinity purification

抗原信息

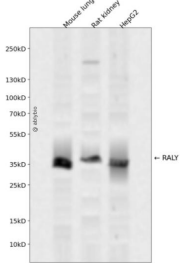
抗原信息	Recombinant fusion protein containing a sequence corresponding to amino acids 96-306 of human RALY (NP_057951.1).
序列	DRPKGLKRAASAIYSGYIFDYDYRDFDYDRFLDYRGLSPVPVPRAVPVKRPRVTVPLVRRVKTNVPVKLFARSTAVTTSSAKIKLKSSSELQAIKTELTIKSNIDALLSRLEQIAAEQKANPDGKKKGDGGGAGGGGGGGGGGGGGSSRPPAPQENTTSEAGLPQGEARTRDDGDEEGLLTHSEEELEHSQDTDADDGALQ

靶点信息

研究背景	This gene encodes a member of the heterogeneous nuclear ribonucleoprotein (hnRNP) gene family. This protein may play a role in pre-mRNA splicing and in embryonic development. Alternate splicing results in multiple transcript variants.
基因ID	22913

基因名	RALY
Swiss	Q9UKM9
别名	RALY;HNRPCL2;P542

产品验证



Western blot analysis of RALY expressed in Mouse lung,Rat kidney,HepG2 using RALY Rabbit pAb at 1:1 000. Secondary antibody: HRP Goat Anti-Rabbit IgG (H+L) at 1:5000. Lysates/proteins: 30ug per lane. B locking buffer: 5% non-fat dry milk in TBST. Detection: ECL Enhanced Kit. Exposure time: 120s.

实验步骤

访问官网浏览详情: www.ablybio.cn