

# NAE1 Rabbit pAb

货号: **AYP15694**

## 产品信息

|       |  |
|-------|--|
| 反应    | Human,Mouse,Rat  |
| 宿主    | Rabbit   |
| 克隆性   | Polyclonal   |
| 预测反应  |  |
| 应用    | WB   |
| 推荐浓度  | <b>WB:</b> 1:500 - 1:1000  |
| 理论分子量 | 50kDa/59kDa/60kDa  |
| 实测分子量 | 60KDa  |
| 形式    | Liquid   |
| 保存条件  | Store at -20°C. Avoid freeze / thaw cycles.<br>Buffer: PBS with 0.01% thiomersal,50% glycerol,pH7.3. |
| 偶联物   | Unconjugated   |
| 阳性对照  | U2OS,OVCAR3,PC-3,Mouse liver,Rat brain   |
| 细胞定位  | Cell membrane  |
| 纯化    | Affinity purification  |

## 抗原信息

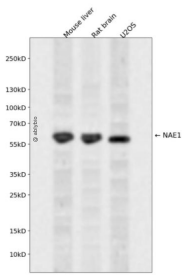
|      |  |
|------|--|
| 抗原信息 | Recombinant fusion protein containing a sequence corresponding to amino acids 1-220 of human NAE1 ( NP_003896.1).  |
| 序列   | MAQLGKLLKEQKYDRQLRLWGDHGQEALSAHVCLINATATGTEILKNLVLPGIGSFTIIDGNQVSGEDAGNNFFLQRSSI<br>GKNRAEAAMEFLQELNSDVSFVEESPENLLDNDPSFFCRFTVVVATQLPESTSLRLADVLWNSQIPLLICRTYGLVGYM<br>RIIKEHPVIESHPDNALEDLRLDKPFPELREHFQSYDLDHMEKKDHSHTPWIVIIAK |

## 靶点信息

|      |  |
|------|--|
| 研究背景 | The protein encoded by this gene binds to the beta-amyloid precursor protein. Beta-amyloid precursor protein is a cell surface protein with signal-transducing properties, and it is thought to play a role in the pathogenesis of Alzheimer's disease. In addition, the encoded protein can form a heterodimer with UBE1C and bind and activate NEDD8, a ubiquitin-like protein. This protein is required for cell cycle progression through the S/M checkpoint. Three transcript variants encoding different isoforms have been found for this gene. |
|------|--|

|       |                                   |
|-------|-----------------------------------|
| 基因ID  | 8883                              |
| 基因名   | NAE1                              |
| Swiss | Q13564                            |
| 别名    | NAE1;A-116A10.1;APPBP1;HPP1;ula-1 |

## 产品验证



Western blot analysis of NAE1 expressed in Mouse liver,Rat brain,U2OS using NAE1 Rabbit pAb at 1:1000. Secondary antibody: HRP Goat Anti-Rabbit IgG (H+L) at 1:5000. Lysates/proteins: 30ug per lane. Blocking buffer: 5% non-fat dry milk in TBST. Detection: ECL Enhanced Kit. Exposure time: 120s.

## 实验步骤

访问官网浏览详情: [www.ablybio.cn](http://www.ablybio.cn)