

PEA15 Rabbit pAb

货号: **AYP15691**

产品信息

反应	Human,Mouse
宿主	Rabbit
克隆性	Polyclonal
预测反应	
应用	WB
推荐浓度	WB: 1:500 - 1:2000
理论分子量	15kDa/17kDa
实测分子量	15kDa
形式	Liquid
保存条件	Store at -20°C. Avoid freeze / thaw cycles. Buffer: PBS with 0.02% sodium azide,50% glycerol,pH7.3.
偶联物	Unconjugated
阳性对照	SH-SY5Y,A375,HeLa,HepG2,NIH/3T3,Mouse liver
细胞定位	Cytoplasm
纯化	Affinity purification

抗原信息

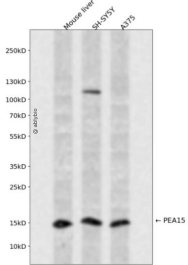
抗原信息	Recombinant fusion protein containing a sequence corresponding to amino acids 1-130 of human PEA15 (NP_003759.1).
序列	MAEYGTLLQDLTNNITLEDLEQLKSACKEDIPSEKSEEITGSAWFSFLESHNKLDKDNLSYIEHIFEISRRPDLLTMVVDYRT RVLKISEEDELDTKLTRIPSAKKYKDIIRQPSEEEIKLAPPPKKA

靶点信息

研究背景	This gene encodes a death effector domain-containing protein that functions as a negative regulator of a poptosis. The encoded protein is an endogenous substrate for protein kinase C. This protein is also overex pressed in type 2 diabetes mellitus, where it may contribute to insulin resistance in glucose uptake. Alter native splicing results in multiple transcript variants.
基因ID	8682

基因名	PEA15
Swiss	Q15121
别名	PEA15;HMAT1;HUMMAT1H;MAT1;MAT1H;PEA-15;PED

产品验证



Western blot analysis of PEA15 expressed in Mouse liver, SH-SY5Y, A375 using PEA15 Rabbit pAb at 1:1000. Secondary antibody: HRP Goat Anti-Rabbit IgG (H+L) at 1:5000. Lysates/proteins: 30ug per lane. Blocking buffer: 5% non-fat dry milk in TBST. Detection: ECL Enhanced Kit. Exposure time: 120s.

实验步骤

访问官网浏览详情: www.ablybio.cn