

RGS14 Rabbit pAb

货号: **AYP15688**

产品信息

反应	Human,Mouse,Rat
宿主	Rabbit
克隆性	Polyclonal
预测反应	
应用	WB IHC
推荐浓度	WB: 1:500 - 1:2000 IHC: 1:50 - 1:200
理论分子量	21kDa/36kDa/44kDa/61kDa
实测分子量	54kDa
形式	Liquid
保存条件	Store at -20°C. Avoid freeze / thaw cycles. Buffer: PBS with 0.02% sodium azide,50% glycerol,pH7.3.
偶联物	Unconjugated
阳性对照	SH-SY5Y,Mouse kidney
细胞定位	Cell junction,Cell membrane,Cell projection,Cytoplasm,Membrane,Nucleus,PML body,centrosome,cytoskeleton,dendrite,dendritic spine,microtubule organizing center,postsynaptic cell membrane,postsynaptic density,spindle,spindle pole,synapse
纯化	Affinity purification

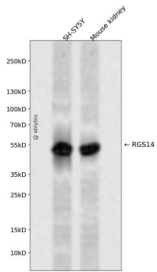
抗原信息

抗原信息	Recombinant fusion protein containing a sequence corresponding to amino acids 230-510 of human RGS 14 (NP_006471.2).
序列	PPVEGPGGRPLRKSFRRELGGTANAALRRESQGSLNSSASLDLGFVSSKSESHRKSLSGTEGESES RPGKYCCVYLP DGTASLALARPGLTIRDMLAGICEKRGSLPDIKVYLVGNEQALVLDQDCTVLADQEVRLN RITFELELTALERVVRISAKPT KRLQEALQPILKHLSPLEVLHRPGEKQPLDLGKLVSSVAAQRLVLDLTPGVKISKARDKSPCRSQGCPRTQDKATHP PPASPSSLVKVPSSATGKRQTCDIEGLVELLN RVQS

靶点信息

研究背景	This gene encodes a member of the regulator of G-protein signaling family. This protein contains one RGS domain, two Raf-like Ras-binding domains (RBDs), and one GoLoco domain. The protein attenuates the signaling activity of G-proteins by binding, through its GoLoco domain, to specific types of activated, GTP-bound G alpha subunits. Acting as a GTPase activating protein (GAP), the protein increases the rate of conversion of the GTP to GDP. This hydrolysis allows the G alpha subunits to bind G beta/gamma subunit heterodimers, forming inactive G-protein heterotrimers, thereby terminating the signal. Alternate transcriptional splice variants of this gene have been observed but have not been thoroughly characterized.
基因ID	10636
基因名	RGS14
Swiss	O43566
别名	RGS14

产品验证



Western blot analysis of RGS14 expressed in SH-SY5Y, Mouse kidney using RGS14 Rabbit pAb at 1:1000. Secondary antibody: HRP Goat Anti-Rabbit IgG (H+L) at 1:5000. Lysates/proteins: 30ug per lane. Blocking buffer: 5% non-fat dry milk in TBST. Detection: ECL Enhanced Kit. Exposure time: 120s.

实验步骤

访问官网浏览详情: www.ablybio.cn