

PMPCA Rabbit pAb

货号: **AYP15687**

产品信息

反应	Human,Mouse,Rat
宿主	Rabbit
克隆性	Polyclonal
预测反应	
应用	WB
推荐浓度	WB: 1:500 - 1:2000
理论分子量	44kDa/58kDa
实测分子量	110kDa
形式	Liquid
保存条件	Store at -20°C. Avoid freeze / thaw cycles. Buffer: PBS with 0.02% sodium azide,50% glycerol,pH7.3.
偶联物	Unconjugated
阳性对照	293T,MCF7,Raji,HeLa
细胞定位	Mitochondrion matrix
纯化	Affinity purification

抗原信息

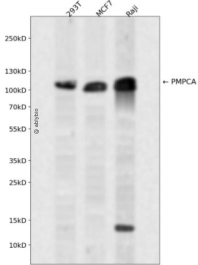
抗原信息	Recombinant fusion protein containing a sequence corresponding to amino acids 456-525 of human PMP CA (NP_055975.1).
序列	TRSRKLPHELCTLIRNVKPEDVKRVASKMLRGKPAVAALGDLTDLPTYEHIQTALSSKDGRRLPRTYRLFR

靶点信息

研究背景	The protein encoded by this gene is found in the mitochondrion, where it represents the alpha subunit of a proteolytic heterodimer. This heterodimer is responsible for cleaving the transit peptide from nuclear-encoded mitochondrial proteins. Defects in this gene are a cause of spinocerebellar ataxia, autosomal recessive 2.
基因ID	23203

基因名	PMPCA
Swiss	Q10713
别名	PMPCA;Alpha-MPP;INPP5E;P-55;SCAR2

产品验证



Western blot analysis of PMPCA expressed in 293T, MCF7, Raji using PMPCA Rabbit pAb at 1:1000. Secondary antibody: HRP Goat Anti-Rabbit IgG (H+L) at 1:5000. Lysates/proteins: 30ug per lane. Blocking buffer: 5% non-fat dry milk in TBST. Detection: ECL Enhanced Kit. Exposure time: 120s.

实验步骤

访问官网浏览详情: www.ablybio.cn