

CLEC1B Rabbit pAb

货号: **AYP15685**

产品信息

反应	Human,Mouse
宿主	Rabbit
克隆性	Polyclonal
预测反应	
应用	WB
推荐浓度	WB: 1:500 - 1:2000
理论分子量	23kDa/26kDa
实测分子量	27kDa
形式	Liquid
保存条件	Store at -20°C. Avoid freeze / thaw cycles. Buffer: PBS with 0.02% sodium azide,50% glycerol,pH7.3.
偶联物	Unconjugated
阳性对照	HepG2,HL-60,Mouse thymus,Mouse lung
细胞定位	Membrane,Single-pass type II membrane protein
纯化	Affinity purification

抗原信息

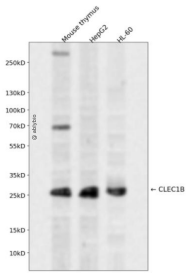
抗原信息	Recombinant fusion protein containing a sequence corresponding to amino acids 22-196 of human CLEC1B (NP_001092901.1).
序列	AVMQRNYLQGENENRTGTLQQLAKRFCQYVVKQSELKGTGFKGHKCSPCDTNWRYYGDSCYGFRRHNLTWEEKQYCTDMNATLLKIDNRNIVEYIKARTHLIRWVGLSRQKSNEVWKWEDGSGVISENMFEFLEDGKGNMNCAYFHNGKMHPTFCENKHYLMCERKAGMTKVDQLP

靶点信息

研究背景	Natural killer (NK) cells express multiple calcium-dependent (C-type) lectin-like receptors, such as CD94 (KLRD1; MIM 602894) and NKG2D (KLRC4; MIM 602893), that interact with major histocompatibility complex class I molecules and either inhibit or activate cytotoxicity and cytokine secretion. CLEC2 is a C-type lectin-like receptor expressed in myeloid cells and NK cells (Colonna et al., 2000 [PubMed 10671229]).[supplied by OMIM, Jan 2011]
------	---

基因ID	51266
基因名	CLEC1B
Swiss	Q9P126
别名	CLEC1B;1810061I13Rik;CLEC2;CLEC2B;PRO1384;QDED721

产品验证



Western blot analysis of CLEC1B expressed in Mouse thymus, HepG2, HL-60 using CLEC1B Rabbit pAb at 1:1000. Secondary antibody: HRP Goat Anti-Rabbit IgG (H+L) at 1:5000. Lysates/proteins: 30ug per lane. Blocking buffer: 5% non-fat dry milk in TBST. Detection: ECL Enhanced Kit. Exposure time: 120s.

实验步骤

访问官网浏览详情: www.ablybio.cn