

RPP25 Rabbit pAb

货号: **AYP15683**

产品信息

反应	Human,Mouse
宿主	Rabbit
克隆性	Polyclonal
预测反应	
应用	WB IHC
推荐浓度	WB: 1:500 - 1:2000 IHC: 1:50 - 1:200
理论分子量	20kDa
实测分子量	20kDa
形式	Liquid
保存条件	Store at -20°C. Avoid freeze / thaw cycles. Buffer: PBS with 0.02% sodium azide,50% glycerol,pH7.3.
偶联物	Unconjugated
阳性对照	A375,HeLa,HT-29
细胞定位	Nucleus
纯化	Affinity purification

抗原信息

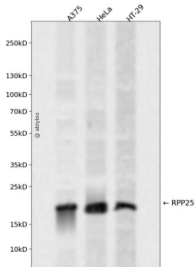
抗原信息	Recombinant fusion protein containing a sequence corresponding to amino acids 1-199 of human RPP25 (NP_060263.2).
序列	MENFRKVRSEEAPAGCGAEGGGPGSGPFADLAPGAVHMRVKEGSKIRNLMAFATASMAQPATRAIVFSGCGRATTKTVT CAEILKRRLAGLHQVTRLRYRSVREVWQSLPPGPTQGQTPGEPAASLSVLKNVPGLAILLSKDALDPRQPGYQPPNPHPGP SSPPAAPASKRSLGEPAAEGESAKRSQPEPGVADEDQTA

靶点信息

研究背景	Component of ribonuclease P, a ribonucleoprotein complex that generates mature tRNA molecules by cleaving their 5'-ends. Also a component of the MRP ribonuclease complex, which cleaves pre-rRNA sequences.
基因ID	54913

基因名	RPP25
Swiss	Q9BUL9
别名	RPP25

产品验证



Western blot analysis of RPP25 expressed in A375, HeLa, HT-29 using RPP25 Rabbit pAb at 1:1000. Secondary antibody: HRP Goat Anti-Rabbit IgG (H+L) at 1:5000. Lysates/proteins: 30ug per lane. Blocking buffer: 5% non-fat dry milk in TBST. Detection: ECL Enhanced Kit. Exposure time: 120s.

实验步骤

访问官网浏览详情: www.ablybio.cn