

SSH2 Rabbit pAb

货号: **AYP15675**

产品信息

反应	Human,Mouse,Rat
宿主	Rabbit
克隆性	Polyclonal
预测反应	
应用	WB
推荐浓度	WB: 1:500 - 1:2000
理论分子量	21kDa/22kDa/51kDa/158kDa
实测分子量	158kDa
形式	Liquid
保存条件	Store at -20°C. Avoid freeze / thaw cycles. Buffer: PBS with 0.02% sodium azide,50% glycerol,pH7.3.
偶联物	Unconjugated
阳性对照	Mouse liver
细胞定位	Cytoplasm,cytoskeleton
纯化	Affinity purification

抗原信息

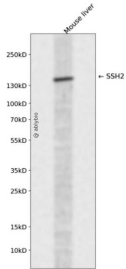
抗原信息	Recombinant fusion protein containing a sequence corresponding to amino acids 53-202 of human SSH2 (NP_001269060.1).
序列	GAALFLPRGNGSSTPRISHRRNKHAGDLQHLQAMFILLRPEDNIRLAVRLESTYQNRTRYMVVVSTNGRQDTEESIVLGMDFSSNDSSTCTMGLVPLWSDTLIHLDDGGFSVSTDNRVHIFKPVSVQAMWVDRDSRNKHCDVLLVEE

靶点信息

研究背景	This gene encodes a protein tyrosine phosphatase that plays a key role in the regulation of actin filament s. The encoded protein dephosphorylates and activates cofilin, which promotes actin filament depolymerization. Alternative splicing results in multiple transcript variants.
基因ID	85464

基因名	SSH2
Swiss	Q76176
别名	SSH2;SSH-2;SSH-2L

产品验证



Western blot analysis of SSH2 expressed in Mouse liver using SSH2 Rabbit pAb at 1:1000. Secondary anti body: HRP Goat Anti-Rabbit IgG (H+L) at 1:5000. Lysates/proteins: 30ug per lane. Blocking buffer: 5% no n-fat dry milk in TBST. Detection: ECL Enhanced Kit. Exposure time: 120s.

实验步骤

访问官网浏览详情: www.ablybio.cn