

FRMD6 Rabbit pAb

货号: **AYP15674**

产品信息

反应	Human,Mouse,Rat
宿主	Rabbit
克隆性	Polyclonal
预测反应	
应用	WB IHC IF/ICC
推荐浓度	WB: 1:1000 - 1:4000 IHC: 1:50 - 1:200 IF/ICC: 1:50 - 1:200
理论分子量	29kDa/70kDa/72kDa
实测分子量	72kDa
形式	Liquid
保存条件	Store at -20°C. Avoid freeze / thaw cycles. Buffer: PBS with 0.01% thiomersal,50% glycerol,pH7.3.
偶联物	Unconjugated
阳性对照	SH-SY5Y,HeLa,HepG2,MCF7,Mouse kidney,OVCAR8,Rat lung,Rat spleen
细胞定位	Cell membrane,Cytoplasm,Cytoplasmic side,Peripheral membrane protein
纯化	Affinity purification

抗原信息

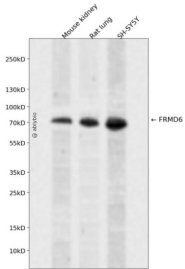
抗原信息	A synthetic peptide corresponding to a sequence within amino acids 100-200 of human FRMD6 (NP_001253975.1).
序列	IDQFGPPMIHFVRVQYYVENGRLISDRAARYYYYWHLRKQVLHSQCVLREEAYFLAAAFALQADLGNFKRNKHYGKYFEPEAYFPSWVVKSRGKDYILKHI

靶点信息

研究背景	Predicted to be involved in actomyosin structure organization. Predicted to act upstream of or within apical constriction; cellular protein localization; and regulation of actin filament-based process. Predicted to be located in apical junction complex. Predicted to be active in cytoskeleton.
基因ID	122786

基因名	FRMD6
Swiss	Q96NE9
别名	FRMD6;C14orf31;EX1;Willin;c14_5320

产品验证



Western blot analysis of FRMD6 expressed in Mouse kidney,Rat lung,SH-SY5Y using FRMD6 Rabbit pAb at 1:1000. Secondary antibody: HRP Goat Anti-Rabbit IgG (H+L) at 1:5000. Lysates/proteins: 30ug per lane. Blocking buffer: 5% non-fat dry milk in TBST. Detection: ECL Enhanced Kit. Exposure time: 120s.

实验步骤

访问官网浏览详情: www.ablybio.cn