

SLC2A13 Rabbit pAb

货号: **AYP15672**

产品信息

反应	Human,Mouse,Rat
宿主	Rabbit
克隆性	Polyclonal
预测反应	
应用	WB
推荐浓度	WB: 1:1000 - 1:4000
理论分子量	70kDa
实测分子量	73kDa
形式	Liquid
保存条件	Store at -20°C. Avoid freeze / thaw cycles. Buffer: PBS with 0.02% sodium azide,50% glycerol,pH7.3.
偶联物	Unconjugated
阳性对照	HeLa,SH-SY5Y,HepG2,NCI-H460,HT-1080,K-562,Mouse kidney,Mouse pancreas,Rat kidney
细胞定位	Membrane,Multi-pass membrane protein
纯化	Affinity purification

抗原信息

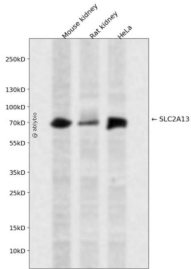
抗原信息	Recombinant fusion protein containing a sequence corresponding to amino acids 564-648 of human SLC2A13 (NP_443117.3).
序列	LHTAEYLTYGAFFLYAGFAAVGLLLFIYGCLPETKGKKLEEIESLFDNRLCTCGTSDSDEGRYIEYIRVKGSNYHLSNDASDVE

靶点信息

研究背景	H(+)-myo-inositol cotransporter. Can also transport related stereoisomers.
基因ID	114134
基因名	SLC2A13

Swiss	Q96QE2
别名	SLC2A13;HMIT

产品验证



Western blot analysis of SLC2A13 expressed in Mouse kidney,Rat kidney,HeLa using SLC2A13 Rabbit p Ab at 1:1000. Secondary antibody: HRP Goat Anti-Rabbit IgG (H+L) at 1:5000. Lysates/proteins: 30ug per lane. Blocking buffer: 5% non-fat dry milk in TBST. Detection: ECL Enhanced Kit. Exposure time: 12 0s.

实验步骤

访问官网浏览详情: www.ablybio.cn