

PELI3 Rabbit pAb

货号: **AYP15671**

产品信息

反应	Human
宿主	Rabbit
克隆性	Polyclonal
预测反应	
应用	WB
推荐浓度	WB: 1:500 - 1:2000
理论分子量	35kDa/43kDa/48kDa/50kDa
实测分子量	50kDa
形式	Liquid
保存条件	Store at -20°C. Avoid freeze / thaw cycles. Buffer: PBS with 0.02% sodium azide, 50% glycerol, pH7.3.
偶联物	Unconjugated
阳性对照	HepG2, A-549, SGC-7901, HeLa
细胞定位	cytosol
纯化	Affinity purification

抗原信息

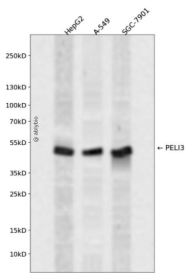
抗原信息	Recombinant fusion protein containing a sequence corresponding to amino acids 1-280 of human PELI3 (NP_659502.2).
序列	MVLEGNPEVGSPTSDDLQHRGNKGSCVLSSPGEDAQPGEPIKYGELIVLGCCEEEGEETEQRGEVTGPRAHSCYNGCLASGDKGRRRSRLALSRRSHANGVKPDVMHHISTPLVSKALSNRQHSISYTLRSHSVIVEYTHDSDTDMFQIGRSTENMIDFVVTDTSPGGGAAEGPSAQSTISRYACRILCDRRPPYTARIYAAGFDASSNIFLGERAAKWRTPDGLMDGLTTNGVLVMPAGGFSEDSAPGVVREISVCGNVYTLRDSRSAQQRGKL

靶点信息

研究背景	The protein encoded by this gene is a scaffold protein and an intermediate signaling protein in the innate immune response pathway. The encoded protein helps transmit the immune response signal from Toll-like receptors to IRAK1/TRAF6 complexes. Several transcript variants encoding different isoforms have been found for this gene.
------	---

基因ID	246330
基因名	PELI3
Swiss	Q8N2H9
别名	PELI3

产品验证



Western blot analysis of PELI3 expressed in HepG2,A-549,SGC-7901 using PELI3 Rabbit pAb at 1:1000. Secondary antibody: HRP Goat Anti-Rabbit IgG (H+L) at 1:5000. Lysates/proteins: 30ug per lane. Blocking buffer: 5% non-fat dry milk in TBST. Detection: ECL Enhanced Kit. Exposure time: 120s.

实验步骤

访问官网浏览详情: www.ablybio.cn