

# Phospho-PXN-Y118 Rabbit pAb

货号: **AYP15641**

## 产品信息

反应	Human,Mouse,Rat
宿主	Rabbit
克隆性	Polyclonal
预测反应	
应用	WB IHC
推荐浓度	<b>WB:</b> 1:500 - 1:2000 <b>IHC:</b> 1:50 - 1:100
理论分子量	46kDa/60kDa/64kDa/66kDa
实测分子量	70kDa
形式	Liquid
保存条件	Store at -20°C. Avoid freeze / thaw cycles. Buffer: PBS with 0.01% thiomersal,50% glycerol,pH7.3.
偶联物	Unconjugated
阳性对照	HeLa,3T3
细胞定位	Cell junction,Cytoplasm,cell cortex,cytoskeleton,focal adhesion
纯化	Affinity purification

## 抗原信息

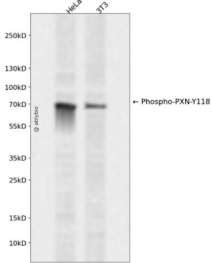
抗原信息	A synthetic phosphorylated peptide around Y118 of human Paxillin (NP_001074324.1).
序列	HVYSF

## 靶点信息

研究背景	This gene encodes a cytoskeletal protein involved in actin-membrane attachment at sites of cell adhesion to the extracellular matrix (focal adhesion). Alternatively spliced transcript variants encoding different iso forms have been described for this gene. These isoforms exhibit different expression pattern, and have different biochemical, as well as physiological properties (PMID:9054445).
基因ID	5829

基因名	PXN
Swiss	P49023
别名	Paxillin;PXN;paxillin

## 产品验证



Western blot analysis of Phospho-PXN-Y118 expressed in HeLa,3T3 using Phospho-PXN-Y118 Rabbit pAb at 1:1000. Secondary antibody: HRP Goat Anti-Rabbit IgG (H+L) at 1:5000. Lysates/proteins: 30 ug per lane. Blocking buffer: 5% non-fat dry milk in TBST. Detection: ECL Enhanced Kit. Exposure time: 120s.

## 实验步骤

访问官网浏览详情: [www.ablybio.cn](http://www.ablybio.cn)