

CLC Rabbit pAb

货号: **AYP15640**

产品信息

反应	Human
宿主	Rabbit
克隆性	Polyclonal
预测反应	
应用	WB
推荐浓度	WB: 1:200 - 1:2000
理论分子量	16kDa
实测分子量	14kDa
形式	Liquid
保存条件	Store at -20°C. Avoid freeze / thaw cycles. Buffer: PBS with 0.01% thiomersal,50% glycerol,pH7.3.
偶联物	Unconjugated
阳性对照	HepG2,HL-60
细胞定位	Cytoplasm,Cytoplasmic granule,cytosol
纯化	Affinity purification

抗原信息

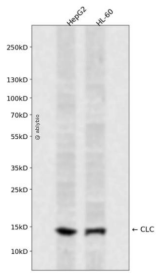
抗原信息	Recombinant fusion protein containing a sequence corresponding to amino acids 1-142 of human CLC (NP_001819.2).
序列	MSLLPVPYTEAASLSTGSTVTIKGRPLACFLNEPYLQVDFHTEMKEESDIVHFHFQVCFGRRVVMNSREYGAWKQQVESKNMPFQDQGQEFELISVLPDKYQVMVNGQSSYTFDHRIKPEAVKMQVWRDISLTKFNVSYLKR

靶点信息

研究背景	Lysophospholipases are enzymes that act on biological membranes to regulate the multifunctional lysophospholipids. The protein encoded by this gene is a lysophospholipase expressed in eosinophils and basophils. It hydrolyzes lysophosphatidylcholine to glycerophosphocholine and a free fatty acid. This protein may possess carbohydrate or IgE-binding activities. It is both structurally and functionally related to the galactin family of beta-galactoside binding proteins. It may be associated with inflammation and some myeloid leukemias.
------	--

基因ID	1178
基因名	CLC
Swiss	Q05315
别名	CLC;GAL10;Gal-10;LGALS10;LGALS10A;LPPL_HUMAN

产品验证



Western blot analysis of CLC expressed in HepG2,HL-60 using CLC Rabbit pAb at 1:1000. Secondary antibody: HRP Goat Anti-Rabbit IgG (H+L) at 1:5000. Lysates/proteins: 30ug per lane. Blocking buffer: 5% non-fat dry milk in TBST. Detection: ECL Enhanced Kit. Exposure time: 120s.

实验步骤

访问官网浏览详情: www.ablybio.cn