

LDB2 Rabbit pAb

货号: **AYP15636**

产品信息

反应	Human,Mouse,Rat
宿主	Rabbit
克隆性	Polyclonal
预测反应	
应用	WB IHC
推荐浓度	WB: 1:500 - 1:2000 IHC: 1:50 - 1:200
理论分子量	38kDa/39kDa/42kDa
实测分子量	43kDa
形式	Liquid
保存条件	Store at -20°C. Avoid freeze / thaw cycles. Buffer: PBS with 0.02% sodium azide,50% glycerol,pH7.3.
偶联物	Unconjugated
阳性对照	U-87MG,Raji,Mouse kidney
细胞定位	Nucleus
纯化	Affinity purification

抗原信息

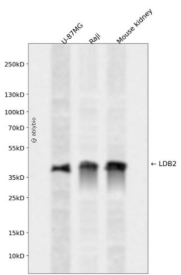
抗原信息	Recombinant fusion protein containing a sequence corresponding to amino acids 204-373 of human LDB2 (NP_001281.1).
序列	LRLCVILEPMQELMSRHKTYNLSRPDCLKTCFLFQKWQRMVAPPAEPTRQPTTKRRKRKNSTSTSNSSAGNNANSTGSKK KTTAANLSLSSQVPDVMVVGEP TLMGGEGFDEDERLITRLENTQYDAANGMDDEEDFNNSPALGNNSPWNSKPPATQE TKSENPPPQASQ

靶点信息

研究背景	The protein encoded by this gene belongs to the LIM-domain binding family. Members of this family are characterized by a conserved nuclear localization sequence, an amino-terminal homodimerization domain and a carboxy-terminal LIM interaction domain. These proteins function as adapter molecules to allow assembly of transcriptional regulatory complexes. Genetic association studies suggest functions for this gene in rhegmatogenous retinal detachment and coronary artery disease. Alternative splicing results in multiple transcript variants.
------	--

基因ID	9079
基因名	LDB2
Swiss	O43679
别名	LDB2;CLIM1;LDB-2;LDB1

产品验证



Western blot analysis of LDB2 expressed in U-87MG,Raji,Mouse kidney using LDB2 Rabbit pAb at 1:1000 . Secondary antibody: HRP Goat Anti-Rabbit IgG (H+L) at 1:5000. Lysates/proteins: 30ug per lane. Blocking buffer: 5% non-fat dry milk in TBST. Detection: ECL Enhanced Kit. Exposure time: 120s.

实验步骤

访问官网浏览详情: www.ablybio.cn