

PP2A-B55 β /PR55 β /PPP2R2B Rabbit pAb

货号: **AYP15634**

产品信息

反应	Human,Mouse,Rat
宿主	Rabbit
克隆性	Polyclonal
预测反应	
应用	WB
推荐浓度	WB: 1:1000 - 1:2000
理论分子量	50kDa/51kDa/52kDa/58kDa/62kDa
实测分子量	52kDa
形式	Liquid
保存条件	Store at -20°C. Avoid freeze / thaw cycles. Buffer: PBS with 0.02% sodium azide,50% glycerol,pH7.3.
偶联物	Unconjugated
阳性对照	U-87MG,SH-SY5Y,HepG2,Mouse brain,Mouse lung,Rat brain
细胞定位	Cytoplasm,Membrane,Mitochondrion,Mitochondrion outer membrane,cytoskeleton
纯化	Affinity purification

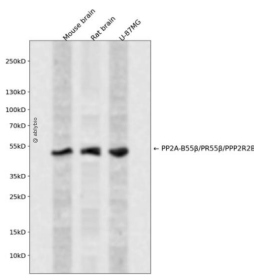
抗原信息

抗原信息	Recombinant fusion protein containing a sequence corresponding to amino acids 160-260 of human PP2A-B55 β /PR55 β /PP2A-B55 β /PR55 β /PPP2R2B (NP_858060.2).
序列	KIRWLPQNAAYFLLSTNDKTVKLWKVSRDKRPEGYNLKDDEGRLRDPATITTLRVPVLRPMDLMVEATPRRVFANAHTYHINSISVNSDYETYMSADDL

靶点信息

研究背景	The product of this gene belongs to the phosphatase 2 regulatory subunit B family. Protein phosphatase 2 is one of the four major Ser/Thr phosphatases, and it is implicated in the negative control of cell growth and division. It consists of a common heteromeric core enzyme, which is composed of a catalytic subunit and a constant regulatory subunit, that associates with a variety of regulatory subunits. The B regulatory subunit might modulate substrate selectivity and catalytic activity. This gene encodes a beta isoform of the regulatory subunit B55 subfamily. Defects in this gene cause autosomal dominant spinocerebellar ataxia 12 (SCA12), a disease caused by degeneration of the cerebellum, sometimes involving the brainstem and spinal cord, and in resulting in poor coordination of speech and body movements. Multiple alternatively spliced variants, which encode different isoforms, have been identified for this gene. The 5' UTR of some of these variants includes a CAG trinucleotide repeat sequence (7-28 copies) that can be expanded to 55-78 copies in cases of SCA12.
基因ID	5521
基因名	PPP2R2B
Swiss	Q00005
别名	PPP2R2B;B55BETA;PP2AB55BETA;PP2ABBETA;PP2APR55B;PP2APR55BETA;PR2AB55BETA;PR2ABBETA;PR2APR55BETA;PR52B;PR55-BETA;PR55BETA;SCA12

产品验证



Western blot analysis of PP2A-B55 β /PR55 β /PPP2R2B expressed in Mouse brain,Rat brain,U-87MG using PP2A-B55 β /PR55 β /PPP2R2B Rabbit pAb at 1:1000. Secondary antibody: HRP Goat Anti-Rabbit IgG (H+L) at 1:5000. Lysates/proteins: 30ug per lane. Blocking buffer: 5% non-fat dry milk in TBST. Detection: ECL Enhanced Kit. Exposure time: 120s.

实验步骤

访问官网浏览详情: www.ablybio.cn