

NOMO1 Rabbit pAb

货号: **AYP15631**

产品信息

反应	Human,Mouse,Rat
宿主	Rabbit
克隆性	Polyclonal
预测反应	
应用	WB IHC
推荐浓度	WB: 1:1000 - 1:2000 IHC: 1:100 - 1:500
理论分子量	134kDa
实测分子量	134kDa
形式	Liquid
保存条件	Store at -20°C. Avoid freeze / thaw cycles. Buffer: PBS with 0.02% sodium azide,50% glycerol,pH7.3.
偶联物	Unconjugated
阳性对照	HT-29,A-431,MCF7,Mouse brain,Mouse kidney,Mouse liver,Rat kidney
细胞定位	Membrane,Single-pass type I membrane protein
纯化	Affinity purification

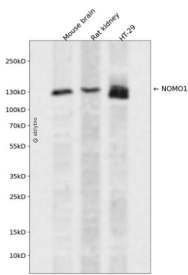
抗原信息

抗原信息	Recombinant fusion protein containing a sequence corresponding to amino acids 700-1000 of human NO MO1 (NP_055102.3).
序列	KSVQELRREQQLAEIEARRQEREKNGNEEGEERMTKPPVQEMVDELQGPFSYDFSYWARSGEKITVTPSSKELLFYPPSME AVVSGESCPGKLIIEIHGKAGLFLEGQIHPELEGVEIVISEKGASSPLITVFTDDKGAYSVGPHSDLEYTVTSQKEGYVLTAVE GTIGDFKAYALAGVSFEIKAEDDQPLPGVLLSLSGGLFRSNLLTQDNGILTFSNLSPGQYYFKPMMKEFRFEPSSQMIEVQE GQNLKITITGYRTAYSCYGTVSSLNGEPEQGVAMEAVGQNDCSIYGEDTDTDEE

靶点信息

研究背景	This gene encodes a protein originally thought to be related to the collagenase gene family. This gene is one of three highly similar genes in a region of duplication located on the p arm of chromosome 16. These three genes encode closely related proteins that may have the same function. The protein encoded by one of these genes has been identified as part of a protein complex that participates in the Nodal signaling pathway during vertebrate development. Mutations in ABCC6, which is located nearby, rather than mutations in this gene are associated with pseudoxanthoma elasticum (PXE).
基因ID	23420
基因名	NOMO1
Swiss	Q15155
别名	NOMO1;Nomo;PM5

产品验证



Western blot analysis of NOMO1 expressed in Mouse brain, Rat kidney, HT-29 using NOMO1 Rabbit pAb at 1:1000. Secondary antibody: HRP Goat Anti-Rabbit IgG (H+L) at 1:5000. Lysates/proteins: 30ug per lane. Blocking buffer: 5% non-fat dry milk in TBST. Detection: ECL Enhanced Kit. Exposure time: 120s.

实验步骤

访问官网浏览详情: www.ablybio.cn