

LAMB2 Rabbit pAb

货号: **AYP15630**

产品信息

反应	Human,Mouse
宿主	Rabbit
克隆性	Polyclonal
预测反应	
应用	WB IF/ICC
推荐浓度	WB: 1:1000 - 1:2000 IF/ICC: 1:50 - 1:200
理论分子量	195kDa
实测分子量	196kDa
形式	Liquid
保存条件	Store at -20°C. Avoid freeze / thaw cycles. Buffer: PBS with 0.01% thiomersal,50% glycerol,pH7.3.
偶联物	Unconjugated
阳性对照	LO2
细胞定位	Secreted,basement membrane,extracellular matrix,extracellular space
纯化	Affinity purification

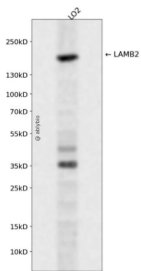
抗原信息

抗原信息	Recombinant fusion protein containing a sequence corresponding to amino acids 1579-1798 of human LA MB2 (NP_002283.3).
序列	DVRRAEQLLQDARRARSWAEDEKQKAETVQAALAEAQRAQGIAQGAIRGAVADTRDTEQTLYQVQERMAGAERALSSA GERARQLDALLEALKLKRAGNSLAASTAEETAGSAQGRAQEAQQLLRGPLGDQYQTVKALAERKAQGVLAQAQRAEQLR DEARDLLQAAQDKLQRLQELEGTYEENERALESKAAQLDGLEARMRSVLQAINLQVQIYNTCC

靶点信息

研究背景	Laminins, a family of extracellular matrix glycoproteins, are the major noncollagenous constituent of basement membranes. They have been implicated in a wide variety of biological processes including cell adhesion, differentiation, migration, signaling, neurite outgrowth and metastasis. Laminins, composed of 3 non-identical chains: laminin alpha, beta and gamma. Some of the chains have been shown to differ with respect to their tissue distribution, presumably reflecting diverse functions in vivo. This gene encodes the beta chain isoform laminin, beta 2. The beta 2 chain contains the 7 structural domains typical of beta chains of laminin, including the short alpha region. However, unlike beta 1 chain, beta 2 has a more restricted tissue distribution. It is enriched in the basement membrane of muscles at the neuromuscular junctions, kidney glomerulus and vascular smooth muscle. Transgenic mice in which the beta 2 chain gene was inactivated by homologous recombination, showed defects in the maturation of neuromuscular junctions and impairment of glomerular filtration. Alternative splicing involving a non-consensus 5' splice site (gc) in the 5' UTR of this gene has been reported. It was suggested that inefficient splicing of this first intron, which does not change the protein sequence, results in a greater abundance of the unspliced form of the transcript than the spliced form.
基因ID	3913
基因名	LAMB2
Swiss	P55268
别名	LAMB2;LAMS;NPHS5

产品验证



Western blot analysis of LAMB2 expressed in LO2 using LAMB2 Rabbit pAb at 1:1000. Secondary antibody: HRP Goat Anti-Rabbit IgG (H+L) at 1:5000. Lysates/proteins: 30ug per lane. Blocking buffer: 5% non-fat dry milk in TBST. Detection: ECL Enhanced Kit. Exposure time: 120s.

实验步骤

访问官网浏览详情: www.ablybio.cn