

Gsdma Rabbit pAb

货号: **AYP15626**

产品信息

反应	Mouse,Rat
宿主	Rabbit
克隆性	Polyclonal
预测反应	
应用	WB
推荐浓度	WB: 1:500 - 1:2000
理论分子量	49kDa
实测分子量	49kDa
形式	Liquid
保存条件	Store at -20°C. Avoid freeze / thaw cycles. Buffer: PBS with 0.01% thiomersal,50% glycerol,pH7.3.
偶联物	Unconjugated
阳性对照	A-431,Mouse stomach,Mouse skin,Rat stomach,Rat skin
细胞定位	Cytoplasm,perinuclear region
纯化	Affinity purification

抗原信息

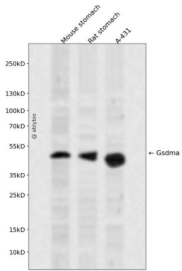
抗原信息	Recombinant fusion protein containing a sequence corresponding to amino acids 248-347 of mouse Gsdma (NP_067322.1).
序列	ASDVGEMHEDFKTLKEEVQRETQEVEKLSVGRSSLLTSLSHLLGKKKELQDLEQTLLEGALDKGHEVTLEALPKDVLLSKD AMDAILYFLGALTVLSEAQ

靶点信息

研究背景	Predicted to enable phosphatidylinositol-4,5-bisphosphate binding activity; phosphatidylinositol-4-phosphate binding activity; and phosphatidylserine binding activity. Predicted to be involved in apoptotic processes; defense response to bacterium; and pyroptosis. Predicted to act upstream of or within programmed cell death. Located in cytoplasm. Is expressed in esophagus epithelium; stomach; stomach cardiac region; stomach glandular region; and stomach glandular region mucosa. Orthologous to human GSDMA (gasdermin A).
------	---

基因ID	57911
基因名	
Swiss	
别名	GSDMA;FKSG9;GSDM;GSDM1;gasdermin-A;Gsdma

产品验证



Western blot analysis of Gsdma expressed in Mouse stomach, Rat stomach, A-431 using Gsdma Rabbit p Ab at 1:1000. Secondary antibody: HRP Goat Anti-Rabbit IgG (H+L) at 1:5000. Lysates/proteins: 30ug per lane. Blocking buffer: 5% non-fat dry milk in TBST. Detection: ECL Enhanced Kit. Exposure time: 120s

实验步骤

访问官网浏览详情: www.ablybio.cn