

PLP1 Rabbit pAb

货号: **AYP15614**

产品信息

反应	Mouse,Rat
宿主	Rabbit
克隆性	Polyclonal
预测反应	
应用	WB IHC IF/ICC
推荐浓度	WB: 1:500 - 1:2000 IHC: 1:50 - 1:200 IF/ICC: 1:50 - 1:200
理论分子量	26kDa/30kDa
实测分子量	20-25kDa
形式	Liquid
保存条件	Store at -20°C. Avoid freeze / thaw cycles. Buffer: PBS with 0.01% thiomersal,50% glycerol,pH7.3.
偶联物	Unconjugated
阳性对照	Mouse brain,Mouse heart,Mouse kidney,Rat brain,Rat kidney
细胞定位	Cell membrane,Multi-pass membrane protein,Myelin membrane
纯化	Affinity purification

抗原信息

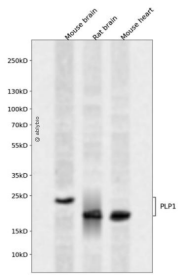
抗原信息	Recombinant fusion protein containing a sequence corresponding to amino acids 90-150 of human PLP1 (NP_000524.3).
序列	GFYTTGAVRQIFGDYKTTICGKLSATVTGGQKGRGSRGQHQHSLERVCHCLGKWLGHDP

靶点信息

研究背景	This gene encodes a transmembrane proteolipid protein that is the predominant component of myelin. The encoded protein may play a role in the compaction, stabilization, and maintenance of myelin sheaths, as well as in oligodendrocyte development and axonal survival. Mutations in this gene cause Pelizaeus-Merzbacher disease and spastic paraplegia type 2. Alternatively splicing results in multiple transcript variants, including the DM20 splice variant.
------	--

基因ID	5354
基因名	PLP1
Swiss	P60201
别名	PLP1;GPM6C;HLD1;MMPL;PLP;PLP/DM20;PMD;SPG2

产品验证



Western blot analysis of PLP1 expressed in Mouse brain,Rat brain,Mouse heart using PLP1 Rabbit pAb at 1:1000. Secondary antibody: HRP Goat Anti-Rabbit IgG (H+L) at 1:5000. Lysates/proteins: 30ug per lane . Blocking buffer: 5% non-fat dry milk in TBST. Detection: ECL Enhanced Kit. Exposure time: 120s.

实验步骤

访问官网浏览详情: www.ablybio.cn