

GLG1 Rabbit pAb

货号: **AYP15605**

产品信息

反应	Human,Mouse
宿主	Rabbit
克隆性	Polyclonal
预测反应	
应用	WB
推荐浓度	WB: 1:500 - 1:1000
理论分子量	134kDa/135kDa/137kDa
实测分子量	135kDa
形式	Liquid
保存条件	Store at -20°C. Avoid freeze / thaw cycles. Buffer: PBS with 0.01% thiomersal,50% glycerol,pH7.3.
偶联物	Unconjugated
阳性对照	A-549,LO2,Mouse brain,Mouse liver
细胞定位	Golgi apparatus membrane,Single-pass type I membrane protein
纯化	Affinity purification

抗原信息

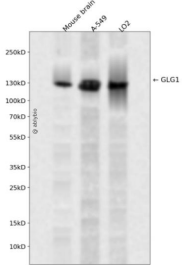
抗原信息	Recombinant fusion protein containing a sequence corresponding to amino acids 974-1203 of human GLG 1 (NP_036333.2).
序列	RYADQRLSSDCEDQIRIIQESALDYRLDPQLQLHCSDEISSLCAEAAAQEQTGQVEECLKVNLLKIKTELCKKEVLNMLKE SKADIFVDPVLHTACALDIKHHCAAITPGRGRQMSCLMEALEDKRVRLQPECKRLNDRIEMWSYAAKVAPADGFSDLAM QVMTSPSKNYILSVISGSICILFLIGLMCGRITKRVTRRELKDRLQYRSETMAYKGLVWSQDVTGSPA

靶点信息

研究背景	Binds fibroblast growth factor and E-selectin (cell-adhesion lectin on endothelial cells mediating the binding of neutrophils).
基因ID	2734

基因名	GLG1
Swiss	Q92896
别名	GLG1;CFR-1;ESL-1;MG-160;MG160

产品验证



Western blot analysis of GLG1 expressed in Mouse brain,A-549,LO2 using GLG1 Rabbit pAb at 1:1000. Secondary antibody: HRP Goat Anti-Rabbit IgG (H+L) at 1:5000. Lysates/proteins: 30ug per lane. Blocking buffer: 5% non-fat dry milk in TBST. Detection: ECL Enhanced Kit. Exposure time: 120s.

实验步骤

访问官网浏览详情: www.ablybio.cn