

# SEMA7A Rabbit pAb

货号: **AYP15602**

## 产品信息

反应	Human
宿主	Rabbit
克隆性	Polyclonal
预测反应	
应用	WB
推荐浓度	<b>WB:</b> 1:500 - 1:1000
理论分子量	73kDa/74kDa
实测分子量	75kDa
形式	Liquid
保存条件	Store at -20°C. Avoid freeze / thaw cycles. Buffer: PBS with 0.01% thiomersal, 50% glycerol, pH7.3.
偶联物	Unconjugated
阳性对照	A-549, HT-29, Raji
细胞定位	Cell membrane, Extracellular side, GPI-anchor, Lipid-anchor
纯化	Affinity purification

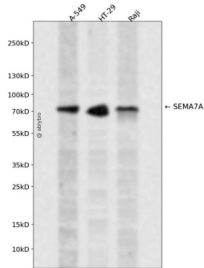
## 抗原信息

抗原信息	Recombinant fusion protein containing a sequence corresponding to amino acids 45-280 of human SEMA 7A (NP_003603.1).
序列	QGHLSRSGPRIFAVWKGHVGGQDRVDFGQTEPHTVLFHEPGSSSVWVGGRGKVVLFDFPEGKNASVRTVNI GSTKGSCLD KRDCENYITLLERRSEGLLACGTNARHPSCWNLVNGTVVPLGEMRGYAPFSPDENSLVLFEGDEVYSTIRKQEYNGKIPRF RRIRGESELYTSDTVMQNPQFIKATIVHQDQAYDDKIYFFREDNPDKNPEAPLNVSRVAQLCRGDQGGESLSVSK

## 靶点信息

研究背景	This gene encodes a member of the semaphorin family of proteins. The encoded preproprotein is proteolytically processed to generate the mature glycosylphosphatidylinositol (GPI)-anchored membrane glycoprotein. The encoded protein is found on activated lymphocytes and erythrocytes and may be involved in immunomodulatory and neuronal processes. The encoded protein carries the John Milton Hagen (JMH) blood group antigens. Mutations in this gene may be associated with reduced bone mineral density (BMD). An alternative splicing results in multiple transcript variants, at least one of which encodes an isoform that is proteolytically processed.
基因ID	8482
基因名	SEMA7A
Swiss	O75326
别名	SEMA7A;CD108;CDw108;H-SEMA-K1;H-Sema-L;JMH;SEMAK1;SEMAL

## 产品验证



Western blot analysis of SEMA7A expressed in A-549, HT-29, Raji using SEMA7A Rabbit pAb at 1:1000. Secondary antibody: HRP Goat Anti-Rabbit IgG (H+L) at 1:5000. Lysates/proteins: 30ug per lane. Blocking buffer: 5% non-fat dry milk in TBST. Detection: ECL Enhanced Kit. Exposure time: 120s.

## 实验步骤

访问官网浏览详情: [www.ablybio.cn](http://www.ablybio.cn)