

— ABLYBIO, Help Your Research



# CD62P/P-selectin Rabbit pAb

货号: **AYP15589**

## 产品信息

反应	Mouse,Rat
宿主	Rabbit
克隆性	Polyclonal
预测反应	
应用	WB
推荐浓度	<b>WB:</b> 1:500 - 1:2000
理论分子量	90kDa
实测分子量	100kDa
形式	Liquid
保存条件	Store at -20°C. Avoid freeze / thaw cycles. Buffer: PBS with 0.02% sodium azide,50% glycerol,pH7.3.
偶联物	Unconjugated
阳性对照	Mouse kidney,Rat brain
细胞定位	Membrane,Single-pass type I membrane protein
纯化	Affinity purification

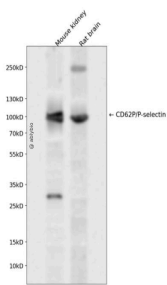
## 抗原信息

抗原信息	Recombinant fusion protein containing a sequence corresponding to amino acids 220-319 of human CD62P/P-selectin (NP_002996.2).
------	--

## 靶点信息

研究背景	This gene encodes a 140 kDa protein that is stored in the alpha-granules of platelets and Weibel-Palade bodies of endothelial cells. This protein redistributes to the plasma membrane during platelet activation and degranulation and mediates the interaction of activated endothelial cells or platelets with leukocytes. The membrane protein is a calcium-dependent receptor that binds to sialylated forms of Lewis blood group carbohydrate antigens on neutrophils and monocytes. Alternative splice variants may occur but are not well documented.
基因ID	6403
基因名	SELP
Swiss	P16109 ( <a href="https://www.uniprot.org/uniprotkb/P16109/entry">https://www.uniprot.org/uniprotkb/P16109/entry</a> )
别名	SELP,CD62,CD62P,GMP140,GRMP,LECAM3,PADGEM,PSEL,CD62P/P-selectin Rabbit pAb,CD62 antigen-like family member P,Granule membrane protein 140,Leukocyte-endothelial cell adhesion molecule 3,Platelet activation dependent granule-external membrane protein,GMRP

## 产品验证



Western blot analysis of CD62P/P-selectin expressed in Mouse kidney,Rat brain using CD62P/P-selectin Rabbit pAb at 1:1000. Secondary antibody: HRP Goat Anti-Rabbit IgG (H+L) at 1:5000. Lysates/proteins: 30ug per lane. Blocking buffer: 5% non-fat dry milk in TBST. Detection: ECL Enhanced Kit. Exposure time: 120 S.

## 实验步骤

访问官网浏览详情: [www.ablybio.cn](http://www.ablybio.cn) (<https://www.ablybio.cn/>[www.ablybio.cn](http://www.ablybio.cn))