

TRPC1 Rabbit pAb

货号: **AYP15588**

产品信息

反应	Human,Mouse
宿主	Rabbit
克隆性	Polyclonal
预测反应	
应用	WB IHC
推荐浓度	WB: 1:500 - 1:2000 IHC: 1:50 - 1:200
理论分子量	87kDa/91kDa
实测分子量	90kDa
形式	Liquid
保存条件	Store at -20°C. Avoid freeze / thaw cycles. Buffer: PBS with 0.02% sodium azide,50% glycerol,pH7.3.
偶联物	Unconjugated
阳性对照	SW480,MCF7,SKOV3,Mouse kidney
细胞定位	Membrane,Multi-pass membrane protein
纯化	Affinity purification

抗原信息

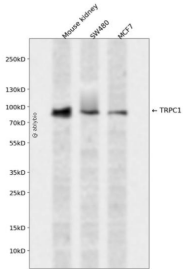
抗原信息	A synthetic peptide corresponding to a sequence within amino acids 400-500 of human TRPC1 (NP_001238774.1).
序列	LLNLYSLVYNEDKKNTMGPALERIDYLLILWIIGMIWSDIKRLWYEGLEDLFLEESRNQLSFVMNSLYLATFALKVVAHNKFHD FADRKDWDAFHPTLVAEG

靶点信息

研究背景	The protein encoded by this gene is a membrane protein that can form a non-selective channel permeable to calcium and other cations. The encoded protein appears to be induced to form channels by a receptor tyrosine kinase-activated phosphatidylinositol second messenger system and also by depletion of intracellular calcium stores. Two transcript variants encoding different isoforms have been found for this gene.
基因ID	7220

基因名	TRPC1
Swiss	P48995
别名	TRPC1;HTRP-1;TRP1

产品验证



Western blot analysis of TRPC1 expressed in Mouse kidney,SW480,MCF7 using TRPC1 Rabbit pAb at 1:1000. Secondary antibody: HRP Goat Anti-Rabbit IgG (H+L) at 1:5000. Lysates/proteins: 30ug per lane. Blocking buffer: 5% non-fat dry milk in TBST. Detection: ECL Enhanced Kit. Exposure time: 120s.

实验步骤

访问官网浏览详情: www.ablybio.cn