

DNAL1 Rabbit pAb

货号: **AYP15584**

产品信息

反应	Human,Mouse,Rat
宿主	Rabbit
克隆性	Polyclonal
预测反应	
应用	WB IHC
推荐浓度	WB: 1:500 - 1:2000 IHC: 1:50 - 1:200
理论分子量	8kDa/17kDa/21kDa
实测分子量	22kDa
形式	Liquid
保存条件	Store at -20°C. Avoid freeze / thaw cycles. Buffer: PBS with 0.02% sodium azide,50% glycerol,pH7.3.
偶联物	Unconjugated
阳性对照	Raji,HeLa,HepG2,U-251MG,Mouse brain,Rat brain,Rat testis
细胞定位	cytoplasm
纯化	Affinity purification

抗原信息

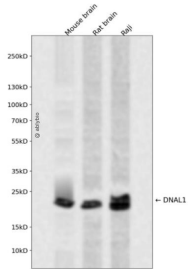
抗原信息	Recombinant fusion protein containing a sequence corresponding to amino acids 41-190 of human DNAL1 (NP_113615.2).
序列	DASLSMLANCEKLSLSTNCIEKIANLNLGNLRLSLGRNNIKNLNGLEAVGDTLEELWISYNFIEKLGKGIHIMKCLKILYMSNNLVKDWAEFVKLAELPCLEDLVFVGNPLEEKHSAENNWIEEATKRVPKLKKLDGTPVIKGDDEEDN

靶点信息

研究背景	This gene encodes an axonemal dynein light chain which functions as a component of the outer dynein arms complex. This complex acts as the molecular motor that provides the force to move cilia in an ATP-dependent manner. The encoded protein is expressed in tissues with motile cilia or flagella and may be involved in the movement of sperm flagella. Alternate splicing results in multiple transcript variants.
基因ID	83544

基因名	DNAL1
Swiss	Q4LDG9
别名	DNAL1;C14orf168;CILD16

产品验证



Western blot analysis of DNAL1 expressed in Mouse brain,Rat brain,Raji using DNAL1 Rabbit pAb at 1:1 000. Secondary antibody: HRP Goat Anti-Rabbit IgG (H+L) at 1:5000. Lysates/proteins: 30ug per lane. Blocking buffer: 5% non-fat dry milk in TBST. Detection: ECL Enhanced Kit. Exposure time: 120s.

实验步骤

访问官网浏览详情: www.ablybio.cn