

# WDR35 Rabbit pAb

货号: **AYP15575**

## 产品信息

反应	Human,Mouse,Rat
宿主	Rabbit
克隆性	Polyclonal
预测反应	
应用	WB IF/ICC
推荐浓度	<b>WB:</b> 1:500 - 1:1000 <b>IF/ICC:</b> 1:50 - 1:200
理论分子量	132kDa/133kDa
实测分子量	133kDa
形式	Liquid
保存条件	Store at -20°C. Avoid freeze / thaw cycles. Buffer: PBS with 0.01% thiomersal,50% glycerol,pH7.3.
偶联物	Unconjugated
阳性对照	LO2
细胞定位	Cytoplasm,centrosome,cilium axoneme,cilium basal body,cytoskeleton,microtubule organizing center
纯化	Affinity purification

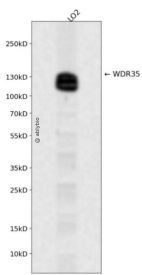
## 抗原信息

抗原信息	Recombinant fusion protein containing a sequence corresponding to amino acids 871-1170 of human WD R35 (NP_065830.2).
序列	CSQPKAAVDTCVHLNQNKAVELAKNHSMKEIGSLARYASHLLEKNKTLDAIELYRKANYFFDAAKLMFKIADEEAKKGS KPLRVKKLYVLSALLIEQYHEQMKNARQKVKGKSSEATSALAGLLEEVLTSTDRFTDNEWRGAEAYHFFILAQRQLYEG CVDTALKTALHLKDYEDIIPPVEIYSLALCACASRAFGTCSKAFIKLSLETLSSEKQKQYEDLALEIFTKHTSKDNRKPELDS LMEGGEGKLPTCVATGSPITEYQFWMCSVCKHGVLAQEISHYSFCPLCHSPVG

## 靶点信息

研究背景	This gene encodes a member of the WD repeat protein family. WD repeats are minimally conserved regions of approximately 40 amino acids typically bracketed by gly-his and trp-asp (GH-WD), which may facilitate formation of heterotrimeric or multiprotein complexes. Members of this family are involved in a variety of cellular processes, including cell cycle progression, signal transduction, apoptosis, and gene regulation. Multiple alternatively spliced transcript variants encoding distinct isoforms have been found for this gene. Two patients with Sensenbrenner syndrome / cranioectodermal dysplasia (CED) were identified with mutations in this gene, consistent with a possible ciliary function.
基因ID	57539
基因名	WDR35
Swiss	Q9P2L0
别名	WDR35;CED2;IFT121;IFTA1;SRTD7

## 产品验证



Western blot analysis of WDR35 expressed in LO2 using WDR35 Rabbit pAb at 1:1000. Secondary antibody: HRP Goat Anti-Rabbit IgG (H+L) at 1:5000. Lysates/proteins: 30ug per lane. Blocking buffer: 5% non-fat dry milk in TBST. Detection: ECL Enhanced Kit. Exposure time: 120s.

## 实验步骤

访问官网浏览详情: [www.ablybio.cn](http://www.ablybio.cn)