

# MCF2 Rabbit pAb

货号: **AYP15573**

## 产品信息

反应	Human,Mouse
宿主	Rabbit
克隆性	Polyclonal
预测反应	
应用	WB
推荐浓度	<b>WB:</b> 1:500 - 1:2000
理论分子量	95kDa/100kDa/107kDa/109kDa/114kDa/116kDa
实测分子量	108kDa
形式	Liquid
保存条件	Store at -20°C. Avoid freeze / thaw cycles. Buffer: PBS with 0.01% thiomersal,50% glycerol,pH7.3.
偶联物	Unconjugated
阳性对照	HT-29
细胞定位	Cytoplasm,Membrane
纯化	Affinity purification

## 抗原信息

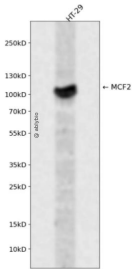
抗原信息	Recombinant fusion protein containing a sequence corresponding to amino acids 872-1001 of human MCF2 (NP_001165347.1).
序列	VKMTWLKEIRNILLKQPELLTVKKRKQDQLTERDKFQISLQNDKQGGAFISTEETELEHTSTVVEVCEAIASVQAEANTVWTEASQSAEISEEPAEWSSNYFYPTYDENEENRPLMRPVSEMALLY

## 靶点信息

研究背景	The oncogenic protein encoded by this gene is a guanine nucleotide exchange factor (GEF) that exerts control over some members of the Rho family of small GTPases. Several transcript variants encoding different isoforms have been found for this gene. These isoforms exhibit different expression patterns and varying levels of GEF activity.
基因ID	4168

基因名	MCF2
Swiss	P10911
别名	MCF2;ARHGEF21;DBL

## 产品验证



Western blot analysis of MCF2 expressed in HT-29 using MCF2 Rabbit pAb at 1:1000. Secondary antibody: HRP Goat Anti-Rabbit IgG (H+L) at 1:5000. Lysates/proteins: 30ug per lane. Blocking buffer: 5% non-fat dry milk in TBST. Detection: ECL Enhanced Kit. Exposure time: 120s.

## 实验步骤

访问官网浏览详情: [www.ablybio.cn](http://www.ablybio.cn)