

MRPS31 Rabbit pAb

货号: **AYP15566**

产品信息

反应	Human,Rat
宿主	Rabbit
克隆性	Polyclonal
预测反应	
应用	WB IHC IF/ICC
推荐浓度	WB: 1:500 - 1:2000 IHC: 1:100 - 1:200 IF/ICC: 1:50 - 1:200
理论分子量	45kDa
实测分子量	37kDa
形式	Liquid
保存条件	Store at -20°C. Avoid freeze / thaw cycles. Buffer: PBS with 0.01% thiomersal,50% glycerol,pH7.3.
偶联物	Unconjugated
阳性对照	Jurkat,HeLa,HepG2,MCF7,A-431
细胞定位	Mitochondrion
纯化	Affinity purification

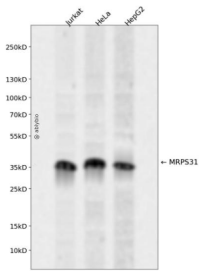
抗原信息

抗原信息	Recombinant fusion protein containing a sequence corresponding to amino acids 66-395 of human MRPS 31 (NP_005821.2).
序列	ICSKKDKQSVRTEETSKETSESQDSEKENTKKDLLGIKGMKVELSTVNVRTTKPPKRRPLKSLEATLGRLRRATEYAPKKRI EPLSPELVAAASAVADSLPFDKQTTKSELLSQLQQHEEESRAQRDAKRPKISFSNIISDMKVARSATARVRSRPELRIQFDE GYDNYPGQEKTDLKKRKNIFTGKRLNIFDMMAVTKEAPETDTSPLWDVEFAKQLATVNEQPLQNGFEELIQWTKEGKL WEFPINNEAGFDDDGSEFHEHIFLEKHLSEFPKQGPPIRHFMELVTCGLSKNPYLSVKQKVEHIEWFRNYFNEKKDILKESNI QFN

靶点信息

研究背景	Mammalian mitochondrial ribosomal proteins are encoded by nuclear genes and help in protein synthesis within the mitochondrion. Mitochondrial ribosomes (mitoribosomes) consist of a small 28S subunit and a large 39S subunit. They have an estimated 75% protein to rRNA composition compared to prokaryotic ribosomes, where this ratio is reversed. Another difference between mammalian mitoribosomes and prokaryotic ribosomes is that the latter contain a 5S rRNA. Among different species, the proteins comprising the mitoribosome differ greatly in sequence, and sometimes in biochemical properties, which prevents easy recognition by sequence homology. The 28S subunit of the mammalian mitoribosome may play a crucial and characteristic role in translation initiation. This gene encodes a 28S subunit protein that has also been associated with type 1 diabetes; however, its relationship to the etiology of this disease remains to be clarified. Pseudogenes corresponding to this gene have been found on chromosomes 3 and 13.
基因ID	10240
基因名	MRPS31
Swiss	Q92665
别名	MRPS31;IMOGN38;MRP-S31;S31mt

产品验证



Western blot analysis of MRPS31 expressed in Jurkat, HeLa, HepG2 using MRPS31 Rabbit pAb at 1:1000. Secondary antibody: HRP Goat Anti-Rabbit IgG (H+L) at 1:5000. Lysates/proteins: 30ug per lane. Blocking buffer: 5% non-fat dry milk in TBST. Detection: ECL Enhanced Kit. Exposure time: 120s.

实验步骤

访问官网浏览详情: www.ablybio.cn