

# CHCHD4 Rabbit pAb

货号: **AYP15552**

## 产品信息

反应	Human,Mouse,Rat
宿主	Rabbit
克隆性	Polyclonal
预测反应	
应用	WB IHC
推荐浓度	<b>WB:</b> 1:500 - 1:2000 <b>IHC:</b> 1:100 - 1:200
理论分子量	15kDa/17kDa
实测分子量	16kDa
形式	Liquid
保存条件	Store at -20°C. Avoid freeze / thaw cycles. Buffer: PBS with 0.01% thiomersal,50% glycerol,pH7.3.
偶联物	Unconjugated
阳性对照	LO2,293T,Mouse liver,Mouse heart,Mouse pancreas
细胞定位	Mitochondrion intermembrane space
纯化	Affinity purification

## 抗原信息

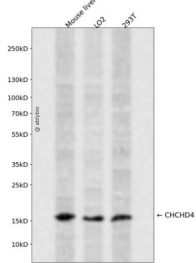
抗原信息	Recombinant fusion protein containing a sequence corresponding to amino acids 1-142 of human CHCHD 4 (NP_001091972.1).
序列	MSYCRQEGKDRIIIFVTKEDHETPSSAELVADDPNDPYEEHGLILPNGNINWNCPLGGMASGPCGEQFKSAFSCFHYTE EIKGSDCVDQFRAMQECMQKYPDLYPQEDEDEEEEREKKPAEQAEETAPIEATATKEEEGSS

## 靶点信息

研究背景	CHCHD4, a component of human mitochondria, belongs to a protein family whose members share 6 highly conserved cysteine residues constituting a -CXC-CX(9)C-CX(9)C- motif in the C terminus (Hofmann et al. , 2005 [PubMed 16185709]).[supplied by OMIM, Mar 2008]
基因ID	131474

基因名	CHCHD4
Swiss	Q8N4Q1
别名	CHCHD4;MIA40;TIMM40

## 产品验证



Western blot analysis of CHCHD4 expressed in Mouse liver, LO2, 293T using CHCHD4 Rabbit pAb at 1:1000. Secondary antibody: HRP Goat Anti-Rabbit IgG (H+L) at 1:5000. Lysates/proteins: 30ug per lane. Blocking buffer: 5% non-fat dry milk in TBST. Detection: ECL Enhanced Kit. Exposure time: 120s.

## 实验步骤

访问官网浏览详情: [www.ablybio.cn](http://www.ablybio.cn)