

# ERCC6L2 Rabbit pAb

货号: **AYP15551**

## 产品信息

反应	Human,Mouse
宿主	Rabbit
克隆性	Polyclonal
预测反应	
应用	WB
推荐浓度	<b>WB:</b> 1:500 - 1:2000
理论分子量	60kDa/81kDa/177kDa
实测分子量	81kDa
形式	Liquid
保存条件	Store at -20°C. Avoid freeze / thaw cycles. Buffer: PBS with 0.01% thiomersal,50% glycerol,pH7.3.
偶联物	Unconjugated
阳性对照	U-87MG,HeLa,LO2,MCF-7,Mouse testis,Mouse kidney
细胞定位	Cytoplasm,Mitochondrion,Nucleus,centrosome,cytoskeleton,microtubule organizing center
纯化	Affinity purification

## 抗原信息

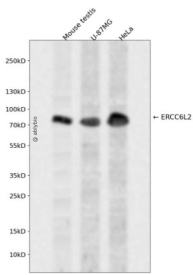
抗原信息	Recombinant fusion protein containing a sequence corresponding to amino acids 1262-1561 of human ERCC6L2 (NP_064592.2).
序列	TSEERQKMLRDFYASQYPEVKEFFVDSVSQFNNSFEKGEQRTRKKSDDKRESLIKPRLSSETLSFKDSTNKISQVCSLKT YKRKSVKFNHISYREEVFFNDAETKKSPPVSTQEIDSGKNSQASEDTVTSRSLNSESETRERRELENTMKDQQLTRTGIS RKEPLLKLENKKIENPVLENTSVISLLGDTSLDLDLDFKSHGNSPTQLPKKVLSGPMEKAKQRPKDFWDILNEQNDESLSKLT DLAVIETLCEKAPLAAPFKRREEPATSLWKSNEKFLWKKFSPSDTDENATNTQSTT

## 靶点信息

研究背景	This gene encodes a member of the Snf2 family of helicase-like proteins. The encoded protein may play a role in DNA repair and mitochondrial function. Mutations in this gene have been associated with bone marrow failure syndrome 2. Alternatively spliced transcript variants that encode different protein isoforms have been described.
------	---

基因ID	375748
基因名	ERCC6L2
Swiss	Q5T890
别名	ERCC6L2;BMFS2;C9orf102;RAD26L;SR278

## 产品验证



Western blot analysis of ERCC6L2 expressed in Mouse testis,U-87MG,HeLa using ERCC6L2 Rabbit pAb at 1:1000. Secondary antibody: HRP Goat Anti-Rabbit IgG (H+L) at 1:5000. Lysates/proteins: 30ug per lane. Blocking buffer: 5% non-fat dry milk in TBST. Detection: ECL Enhanced Kit. Exposure time: 120s.

## 实验步骤

访问官网浏览详情: [www.ablybio.cn](http://www.ablybio.cn)