

# SLC29A1 Rabbit pAb

货号: **AYP15544**

## 产品信息

|       |  |
|-------|--|
| 反应    | Human  |
| 宿主    | Rabbit   |
| 克隆性   | Polyclonal   |
| 预测反应  |  |
| 应用    | WB   |
| 推荐浓度  | <b>WB:</b> 1:1000 - 1:2000   |
| 理论分子量 | 50kDa/58kDa  |
| 实测分子量 | 50kDa  |
| 形式    | Liquid   |
| 保存条件  | Store at -20°C. Avoid freeze / thaw cycles.<br>Buffer: PBS with 0.01% thiomersal, 50% glycerol, pH7.3. |
| 偶联物   | Unconjugated   |
| 阳性对照  | U-87MG   |
| 细胞定位  | Apical cell membrane, Basolateral cell membrane, Cell membrane, Multi-pass membrane protein            |
| 纯化    | Affinity purification  |

## 抗原信息

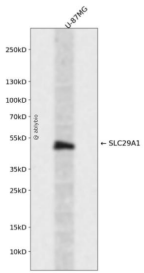
|      |   |
|------|---|
| 抗原信息 | A synthetic peptide corresponding to a sequence within amino acids 200-300 of human SLC29A1 (NP_001071645.1). |
| 序列   | ELSESAFGYFITACAVIILTIICYLGLPRLEFYRYQQLKLEGPGEQETKLDLISKGEEPRAKKEESGVSVSNSQPTNESHSIKAI<br>LKNISVLAFSVCFF       |

## 靶点信息

|      |   |
|------|---|
| 研究背景 | This gene is a member of the equilibrative nucleoside transporter family. The gene encodes a transmembrane glycoprotein that localizes to the plasma and mitochondrial membranes and mediates the cellular uptake of nucleosides from the surrounding medium. The protein is categorized as an equilibrative (as opposed to concentrative) transporter that is sensitive to inhibition by nitrobenzylthioinosine (NBMPR). Nucleoside transporters are required for nucleotide synthesis in cells that lack de novo nucleoside synthesis pathways, and are also necessary for the uptake of cytotoxic nucleosides used for cancer and viral chemotherapies. Multiple alternatively spliced variants, encoding the same protein, have been found for this gene. |
|------|---|

|       |              |
|-------|--------------|
| 基因ID  | 2030         |
| 基因名   | SLC29A1      |
| Swiss | Q99808       |
| 别名    | SLC29A1;ENT1 |

## 产品验证



Western blot analysis of SLC29A1 expressed in U-87MG using SLC29A1 Rabbit pAb at 1:1000. Secondary antibody: HRP Goat Anti-Rabbit IgG (H+L) at 1:5000. Lysates/proteins: 30ug per lane. Blocking buffer: 5% non-fat dry milk in TBST. Detection: ECL Enhanced Kit. Exposure time: 120s.

## 实验步骤

访问官网浏览详情: [www.ablybio.cn](http://www.ablybio.cn)