

MYBPC2 Rabbit pAb

货号: **AYP15540**

产品信息

反应	Human,Mouse,Rat
宿主	Rabbit
克隆性	Polyclonal
预测反应	
应用	WB
推荐浓度	WB: 1:500 - 1:2000
理论分子量	128kDa
实测分子量	140kDa
形式	Liquid
保存条件	Store at -20°C. Avoid freeze / thaw cycles. Buffer: PBS with 0.02% sodium azide,50% glycerol,pH7.3.
偶联物	Unconjugated
阳性对照	Mouse skeletal muscle,Rat skeletal muscle
细胞定位	cytosol
纯化	Affinity purification

抗原信息

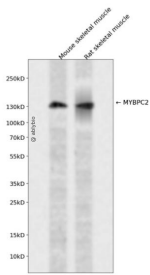
抗原信息	Recombinant fusion protein containing a sequence corresponding to amino acids 912-1141 of human MYBPC2 (NP_004524.3).
序列	LSVQIENMKDTATIRRVVEKAGPPINVMVKEVWGTNALVEWQAPKDDGNSEIMGYFVQKADKKTMEWFNVYERNRHTS CTVSDLIVGNEYFRVYTENICGLSDSPGVSKNTARILKTGITFKPEYKEHDFRMAPKFLTPLIDRVVVAGYSAALNCAVRG HPKPKVWWMKNKMEIREDPKFLITNYQGVLTNIRRPSPFDAGTYTCRAVNELGEALAECKLEVRVPQ

靶点信息

研究背景	This gene encodes a member of the myosin-binding protein C family. This family includes the fast-, slow- and cardiac-type isoforms, each of which is a myosin-associated protein found in the cross-bridge-bearing zone (C region) of A bands in striated muscle. The protein encoded by this locus is referred to as the fast-type isoform. Mutations in the related but distinct genes encoding the slow-type and cardiac-type isoform s have been associated with distal arthrogyriposis, type 1 and hypertrophic cardiomyopathy, respectively.
------	--

基因ID	4606
基因名	MYBPC2
Swiss	Q14324
别名	MYBPC2;MYBPC;MYBPCF;fast-type

产品验证



Western blot analysis of MYBPC2 expressed in Mouse skeletal muscle,Rat skeletal muscle using MYBPC2 R abbit pAb at 1:1000. Secondary antibody: HRP Goat Anti-Rabbit IgG (H+L) at 1:5000. Lysates/proteins: 30 ug per lane. Blocking buffer: 5% non-fat dry milk in TBST. Detection: ECL Enhanced Kit. Exposure time: 12 0s.

实验步骤

访问官网浏览详情: www.ablybio.cn