

CHD2 Rabbit pAb

货号: **AYP15530**

产品信息

反应	Human
宿主	Rabbit
克隆性	Polyclonal
预测反应	
应用	WB
推荐浓度	WB: 1:500 - 1:2000
理论分子量	56kDa/200kDa/211kDa
实测分子量	270kDa
形式	Liquid
保存条件	Store at -20°C. Avoid freeze / thaw cycles. Buffer: PBS with 0.02% sodium azide,50% glycerol,pH7.3.
偶联物	Unconjugated
阳性对照	A-431,Jurkat,HeLa,LO2,K-562
细胞定位	Nucleus
纯化	Affinity purification

抗原信息

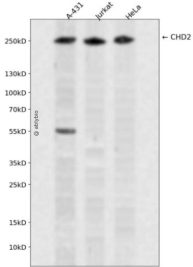
抗原信息	A synthetic peptide corresponding to a sequence within amino acids 1700 to the C-terminus of human CHD2 (NP_001262.3).
序列	YDQYSSDRDRHGRDYYDRHHHDSKRRRSDEFRPQNYHQDFRRMSDHRPAMGYHGQGPSDHYSFHTDKLGEYK QLPLPLHPAVSDPRSPPSQKSPHDSKSPLDHRSPLERSLEQKNPDYNNVVRKT

靶点信息

研究背景	The CHD family of proteins is characterized by the presence of chromo (chromatin organization modifier) domains and SNF2-related helicase/ATPase domains. CHD genes alter gene expression possibly by modification of chromatin structure thus altering access of the transcriptional apparatus to its chromosomal DNA template. Alternatively spliced transcript variants encoding distinct isoforms have been found for this gene.
基因ID	1106

基因名	CHD2
Swiss	O14647
别名	CHD2;EEOC

产品验证



Western blot analysis of CHD2 expressed in A-431, Jurkat, HeLa using CHD2 Rabbit pAb at 1:1000. Secondary antibody: HRP Goat Anti-Rabbit IgG (H+L) at 1:5000. Lysates/proteins: 30ug per lane. Blocking buffer: 5% non-fat dry milk in TBST. Detection: ECL Enhanced Kit. Exposure time: 120s.

实验步骤

访问官网浏览详情: www.ablybio.cn