

# PP2A-B56 $\beta$ /PR61 $\beta$ /PPP2R5B Rabbit pAb

货号: AYP15503

## 产品信息

反应	Human
宿主	Rabbit
克隆性	Polyclonal
预测反应	
应用	WB
推荐浓度	<b>WB:</b> 1:500 - 1:2000
理论分子量	57kDa
实测分子量	57kDa
形式	Liquid
保存条件	Store at -20°C. Avoid freeze / thaw cycles. Buffer: PBS with 0.01% thiomersal, 50% glycerol, pH7.3.
偶联物	Unconjugated
阳性对照	U-87MG
细胞定位	Cytoplasm
纯化	Affinity purification

## 抗原信息

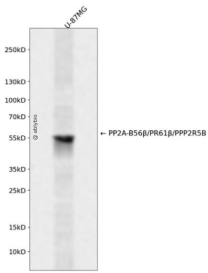
抗原信息	Recombinant fusion protein containing a sequence corresponding to amino acids 1-130 of human PP2A-B56 $\beta$ /PR61 $\beta$ /PP2A-B56 $\beta$ /PR61 $\beta$ /PPP2R5B (NP_006235.1).
序列	METKLPPASTPTSPSSPGLSPVPPDKVDGFSRRSLRRARPRRSHSSSQFRYQSNQQELTPLPLLKDVPASELHELLSRKLAQCGVMFDLDCVADLKGKEVKRAALNELVECVGSTRGVLIIEPVYPDII

## 靶点信息

研究背景	The product of this gene belongs to the phosphatase 2A regulatory subunit B family. Protein phosphatase 2A is one of the four major Ser/Thr phosphatases, and it is implicated in the negative control of cell growth and division. It consists of a common heteromeric core enzyme, which is composed of a catalytic subunit and a constant regulatory subunit, that associates with a variety of regulatory subunits. The B regulatory subunit might modulate substrate selectivity and catalytic activity. This gene encodes a beta isoform of the regulatory subunit B56 subfamily.
------	---

基因ID	5526
基因名	PPP2R5B
Swiss	Q15173
别名	PPP2R5B;B56B;PR61B;B56beta

## 产品验证



Western blot analysis of PP2A-B56 $\beta$ /PR61 $\beta$ /PPP2R5B expressed in U-87MG using PP2A-B56 $\beta$ /PR61 $\beta$ /PPP2R5B Rabbit pAb at 1:1000. Secondary antibody: HRP Goat Anti-Rabbit IgG (H+L) at 1:5000. Lysate s/proteins: 30ug per lane. Blocking buffer: 5% non-fat dry milk in TBST. Detection: ECL Enhanced Kit. Exposure time: 120s.

## 实验步骤

访问官网浏览详情: [www.ablybio.cn](http://www.ablybio.cn)