

# COMTD1 Rabbit pAb

货号: **AYP15497**

## 产品信息

反应	Human,Mouse,Rat
宿主	Rabbit
克隆性	Polyclonal
预测反应	
应用	WB
推荐浓度	<b>WB:</b> 1:500 - 1:2000
理论分子量	28kDa
实测分子量	29kDa
形式	Liquid
保存条件	Store at -20°C. Avoid freeze / thaw cycles. Buffer: PBS with 0.01% thiomersal,50% glycerol,pH7.3.
偶联物	Unconjugated
阳性对照	HepG2,NCI-H460,Mouse lung,Rat pancreas
细胞定位	Membrane,Single-pass type II membrane protein
纯化	Affinity purification

## 抗原信息

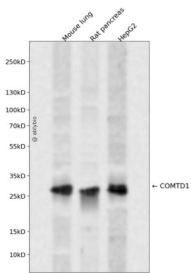
抗原信息	Recombinant fusion protein containing a sequence corresponding to amino acids 33-262 of human COMTD1 (NP_653190.2).
序列	RRCPPWRGRREQCLLPEDSRLWQYLLSRSMREHPALRSLRLLTLEQPQGDMMTCEQAQLLANLARLIQAKKALDLGTF TGYSALALALALPADGRVVTCEVDAQPELGRPLWRQAEAEHKIDLRPKPALETLELLAAGEAGTFDVAVVDADKENC SAYYERCLQLLRPGGILAVLRVLRGKVLQPPKGDVAAECVRNLNERIRRDVRYVYISLLPLGDGLTLAFKI

## 靶点信息

研究背景	Putative O-methyltransferase.
基因ID	118881
基因名	COMTD1

Swiss	Q86VU5
别名	COMTD1

## 产品验证



Western blot analysis of COMTD1 expressed in Mouse lung,Rat pancreas,HepG2 using COMTD1 Rabbit pAb at 1:1000. Secondary antibody: HRP Goat Anti-Rabbit IgG (H+L) at 1:5000. Lysates/proteins: 30ug per lane. Blocking buffer: 5% non-fat dry milk in TBST. Detection: ECL Enhanced Kit. Exposure time: 12 0s.

## 实验步骤

访问官网浏览详情: [www.ablybio.cn](http://www.ablybio.cn)