

# RXFP2 Rabbit pAb

货号: **AYP15496**

## 产品信息

反应	Mouse,Rat
宿主	Rabbit
克隆性	Polyclonal
预测反应	
应用	WB
推荐浓度	<b>WB:</b> 1:500 - 1:2000
理论分子量	83kDa/86kDa
实测分子量	86kDa
形式	Liquid
保存条件	Store at -20°C. Avoid freeze / thaw cycles. Buffer: PBS with 0.01% thiomersal,50% glycerol,pH7.3.
偶联物	Unconjugated
阳性对照	Mouse kidney,Rat kidney
细胞定位	Cell membrane,Multi-pass membrane protein
纯化	Affinity purification

## 抗原信息

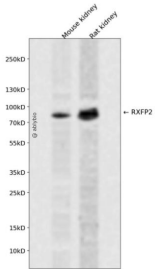
抗原信息	Recombinant fusion protein containing a sequence corresponding to amino acids 80-180 of human RXFP2 (NP_570718.1).
序列	CGDTSGWATIFGTVHGNANSVALTQECFLKQYPQCCDCKETELEC VNGDLKSVPMISNNVTLLSLKKNKIHS L PDKVFIKY TKLKKIFLQHNCIRHISRKA

## 靶点信息

研究背景	This gene encodes a member of the GPCR (G protein-coupled, 7-transmembrane receptor) family. Mutations in this gene are associated with cryptorchidism. Alternatively spliced transcript variants encoding different isoforms have been found for this gene.
基因ID	122042

基因名	RXFP2
Swiss	Q8WXD0
别名	RXFP2;GPR106;GREAT;INSL3R;LGR8;LGR8.1;RXFP2

## 产品验证



Western blot analysis of RXFP2 expressed in Mouse kidney,Rat kidney using RXFP2 Rabbit pAb at 1:1000. Secondary antibody: HRP Goat Anti-Rabbit IgG (H+L) at 1:5000. Lysates/proteins: 30ug per lane. Blocking buffer: 5% non-fat dry milk in TBST. Detection: ECL Enhanced Kit. Exposure time: 120s.

## 实验步骤

访问官网浏览详情: [www.ablybio.cn](http://www.ablybio.cn)