

G2E3 Rabbit pAb

货号: **AYP15490**

产品信息

反应	Human,Mouse,Rat
宿主	Rabbit
克隆性	Polyclonal
预测反应	
应用	WB
推荐浓度	WB: 1:500 - 1:2000
理论分子量	80kDa
实测分子量	80kDa
形式	Liquid
保存条件	Store at -20°C. Avoid freeze / thaw cycles. Buffer: PBS with 0.01% thiomersal,50% glycerol,pH7.3.
偶联物	Unconjugated
阳性对照	U-87MG,LO2,293T,OVCAR3,Mouse eye,Mouse brain,Mouse liver,Rat testis
细胞定位	Cytoplasm,Nucleus,nucleolus
纯化	Affinity purification

抗原信息

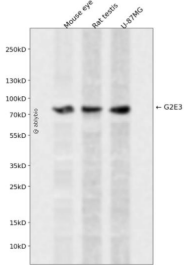
抗原信息	Recombinant fusion protein containing a sequence corresponding to amino acids 1-180 of human G2E3 (NP_060239.2).
序列	MNESKPGDSQNLACVFCRKHDDCPNKYGEKKTKEKWNLTVHYCLLMSSGIWQRGKEEEGVYGFIEDIRKEVNRASKL KCCVCKKNGASIGCVAPRCKRSYHFPCGLQRECFQFTGNFASFCWDHRPVQIITSNNYRESLPCTICLEFIEPIPSYNILRSP CCKNAWFHRDCLQVQAI

靶点信息

研究背景	E3 ubiquitin-protein ligase which accepts ubiquitin from an E2 ubiquitin-conjugating enzyme in the form of a thioester and then directly transfers the ubiquitin to targeted substrates. Essential in early embryonic development to prevent apoptotic death.
基因ID	55632

基因名	G2E3
Swiss	Q7L622
别名	G2E3;KIAA1333;PHF7B

产品验证



Western blot analysis of G2E3 expressed in Mouse eye,Rat testis,U-87MG using G2E3 Rabbit pAb at 1:1 000. Secondary antibody: HRP Goat Anti-Rabbit IgG (H+L) at 1:5000. Lysates/proteins: 30ug per lane. B locking buffer: 5% non-fat dry milk in TBST. Detection: ECL Enhanced Kit. Exposure time: 120s.

实验步骤

访问官网浏览详情: www.ablybio.cn