

COL2A1 Rabbit pAb

货号: **AYP15462**

产品信息

反应	Mouse,Rat
宿主	Rabbit
克隆性	Polyclonal
预测反应	
应用	WB IF/ICC
推荐浓度	WB: 1:100 - 1:500 IF/ICC: 1:50 - 1:200
理论分子量	29kDa/134kDa/141kDa
实测分子量	141kDa
形式	Liquid
保存条件	Store at -20°C. Avoid freeze / thaw cycles. Buffer: PBS with 0.05% proclin300,50% glycerol,pH7.3.
偶联物	Unconjugated
阳性对照	Mouse skeletal muscle
细胞定位	Secreted,extracellular matrix,extracellular space
纯化	Affinity purification

抗原信息

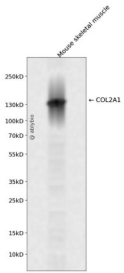
抗原信息	A synthetic peptide corresponding to a sequence within amino acids 1200-1300 of human COL2A1 (NP_001835.3).
序列	GPPGNPGPPGPPGPPGPGIDMSAFAGLGPREGPDPLQYMRADQAAGGLRQHDAEVDATLKLNNQIESIRSPEGSRKNPARTCRDLKLCHPEWKSGDYWI

靶点信息

研究背景	This gene encodes the alpha-1 chain of type II collagen, a fibrillar collagen found in cartilage and the vitreous humor of the eye. Mutations in this gene are associated with achondrogenesis, chondrodysplasia, early onset familial osteoarthritis, SED congenita, Langer-Saldino achondrogenesis, Kniest dysplasia, Stickler syndrome type I, and spondyloepimetaphyseal dysplasia Strudwick type. In addition, defects in processing chondrocalcin, a calcium binding protein that is the C-propeptide of this collagen molecule, are also associated with chondrodysplasia. There are two transcripts identified for this gene.
------	---

基因ID	1280
基因名	COL2A1
Swiss	P02458
别名	COL2A1;ANFH;AOM;COL11A3;SEDC;STL1

产品验证



Western blot analysis of COL2A1 expressed in Mouse skeletal muscle using COL2A1 Rabbit pAb at 1:1000. Secondary antibody: HRP Goat Anti-Rabbit IgG (H+L) at 1:5000. Lysates/proteins: 30ug per lane. Blocking buffer: 5% non-fat dry milk in TBST. Detection: ECL Enhanced Kit. Exposure time: 120s.

实验步骤

访问官网浏览详情: www.ablybio.cn