

Phospho-YWHAZ-S58 Rabbit pAb

货号: **AYP15453**

产品信息

反应	Human,Mouse,Rat
宿主	Rabbit
克隆性	Polyclonal
预测反应	
应用	WB IHC IF/ICC
推荐浓度	WB: 1:500 - 1:2000 IHC: 1:50 - 1:100 IF/ICC: 1:100 - 1:200
理论分子量	19kDa/27kDa
实测分子量	28kDa
形式	Liquid
保存条件	Store at -20°C. Avoid freeze / thaw cycles. Buffer: PBS with 0.02% sodium azide,50% glycerol,pH7.3.
偶联物	Unconjugated
阳性对照	HeLa
细胞定位	Cytoplasm,Melanosome
纯化	Affinity purification

抗原信息

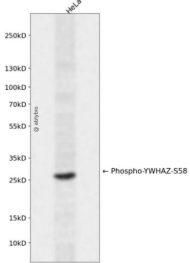
抗原信息	A phospho specific peptide corresponding to residues surrounding S58 of human YWHAZ
序列	

靶点信息

研究背景	This gene product belongs to the 14-3-3 family of proteins which mediate signal transduction by binding to phosphoserine-containing proteins. This highly conserved protein family is found in both plants and mammals, and this protein is 99% identical to the mouse, rat and sheep orthologs. The encoded protein interacts with IRS1 protein, suggesting a role in regulating insulin sensitivity. Several transcript variants that differ in the 5' UTR but that encode the same protein have been identified for this gene.
基因ID	7534

基因名	YWHAZ
Swiss	P63104
别名	YWHAZ;14-3-3-zeta;HEL-S-3;HEL-S-93;HEL4;KCIP-1;YWHAD

产品验证



Western blot analysis of Phospho-YWHAZ-S58 expressed in HeLa using Phospho-YWHAZ-S58 Rabbit pAb at 1:1000. Secondary antibody: HRP Goat Anti-Rabbit IgG (H+L) at 1:5000. Lysates/proteins: 30ug per lane. Blocking buffer: 5% non-fat dry milk in TBST. Detection: ECL Enhanced Kit. Exposure time: 120s.

实验步骤

访问官网浏览详情: www.ablybio.cn