

DISP1 Rabbit pAb

货号: **AYP15449**

产品信息

反应	Human
宿主	Rabbit
克隆性	Polyclonal
预测反应	
应用	WB
推荐浓度	WB: 1:500 - 1:2000
理论分子量	170kDa
实测分子量	180kDa
形式	Liquid
保存条件	Store at -20°C. Avoid freeze / thaw cycles. Buffer: PBS with 0.01% thiomersal,50% glycerol,pH7.3.
偶联物	Unconjugated
阳性对照	HT-29,HeLa
细胞定位	Membrane,Multi-pass membrane protein
纯化	Affinity purification

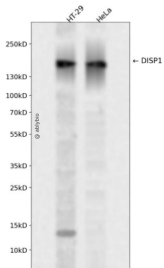
抗原信息

抗原信息	Recombinant fusion protein containing a sequence corresponding to amino acids 1325-1524 of human DISP1 (NP_116279.2).
序列	FVHPITHIHHCPCLQGRVKPAGMQNSLPRNFFLHPVQHIQAQEKIGKTNVHSLQRSIEEHLPKMAEPSSFVCRSTGSLLKTC CDPENKQRELCKNRDVSNLESSGGTENKAGGKVELSLSQTDASVNSEHFNQNEPKVLFNHLMGEGCRSCPNNNSQSCG RIVRVKCNVDCQMPNMEANVPAVLTHSELSGESLLIKTL

靶点信息

研究背景	The pattern of cellular proliferation and differentiation that leads to normal development of embryonic structures often depends upon the localized production of secreted protein signals. Cells surrounding the source of a particular signal respond in a graded manner according to the effective concentration of the signal, and this response produces the pattern of cell types constituting the mature structure. A novel segment-polarity gene known as dispatched has been identified in Drosophila and its protein product is required for normal Hedgehog (Hh) signaling. This gene is one of two human homologs of Drosophila dispatched and, based on sequence identity to its mouse counterpart, the encoded protein may play an essential role in Hh patterning activities in the early embryo.
基因ID	84976
基因名	DISP1
Swiss	Q96F81
别名	DISP1;DISPA

产品验证



Western blot analysis of DISP1 expressed in HT-29, HeLa using DISP1 Rabbit pAb at 1:1000. Secondary antibody: HRP Goat Anti-Rabbit IgG (H+L) at 1:5000. Lysates/proteins: 30ug per lane. Blocking buffer: 5% non-fat dry milk in TBST. Detection: ECL Enhanced Kit. Exposure time: 120s.

实验步骤

访问官网浏览详情: www.ablybio.cn