

GP6 Rabbit pAb

货号: **AYP15442**

产品信息

反应	Human
宿主	Rabbit
克隆性	Polyclonal
预测反应	
应用	WB
推荐浓度	WB: 1:500 - 1:2000
理论分子量	35kDa/36kDa/67kDa
实测分子量	55kDa
形式	Liquid
保存条件	Store at -20°C. Avoid freeze / thaw cycles. Buffer: PBS with 0.01% thiomersal, 50% glycerol, pH7.3.
偶联物	Unconjugated
阳性对照	Jurkat, human plasma
细胞定位	Cell membrane, Single-pass membrane protein
纯化	Affinity purification

抗原信息

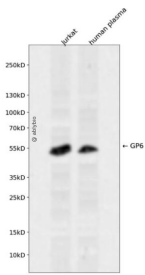
抗原信息	A synthetic peptide corresponding to a sequence within amino acids 200 to the C-terminus of human GP6 (NP_057447.4).
序列	LWVTGTSVTPSRLPTEPPSPVAEFSEATAELTVSFTNEVFTTETSRISITASPKESDSPAGPARQYYTKGNLVRICLGAVILILA GFLAEDWHSRRKRLRHRGRAVQRPLPLPLPQTRKSHGGQDGGRRQDVHSRGLCS

靶点信息

研究背景	This gene encodes a platelet membrane glycoprotein of the immunoglobulin superfamily. The encoded protein is a receptor for collagen and plays a critical role in collagen-induced platelet aggregation and thrombus formation. The encoded protein forms a complex with the Fc receptor gamma-chain that initiates the platelet activation signaling cascade upon collagen binding. Mutations in this gene are a cause of platelet-type bleeding disorder-11 (BDPLT11). Alternatively spliced transcript variants encoding multiple isoforms have been observed for this gene.
------	---

基因ID	51206
基因名	GP6
Swiss	Q9HCN6
别名	GP6;BDPLT11;GPIV;GPVI

产品验证



Western blot analysis of GP6 expressed in Jurkat, human plasma using GP6 Rabbit pAb at 1:1000. Secondary antibody: HRP Goat Anti-Rabbit IgG (H+L) at 1:5000. Lysates/proteins: 30ug per lane. Blocking buffer: 5% non-fat dry milk in TBST. Detection: ECL Enhanced Kit. Exposure time: 120s.

实验步骤

访问官网浏览详情: www.ablybio.cn