

ARL2BP Rabbit pAb

货号: **AYP15434**

产品信息

反应	Human
宿主	Rabbit
克隆性	Polyclonal
预测反应	
应用	WB
推荐浓度	WB: 1:500 - 1:2000
理论分子量	17kDa/18kDa
实测分子量	19kDa
形式	Liquid
保存条件	Store at -20°C. Avoid freeze / thaw cycles. Buffer: PBS with 0.01% thiomersal, 50% glycerol, pH7.3.
偶联物	Unconjugated
阳性对照	U-251MG, MCF7
细胞定位	Cytoplasm, Mitochondrion intermembrane space, Nucleus, centrosome, cilium basal body, cytoskeleton, microtubule organizing center, spindle
纯化	Affinity purification

抗原信息

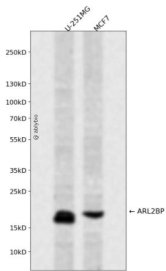
抗原信息	A synthetic peptide corresponding to a sequence within amino acids 1-100 of human ARL2BP (NP_036238.1).
序列	MDALEGESFALSFSSASDAEFDAVVGYLEDIIMDDEFQLLQRNFMCKYILEFEDTEENKLIYTPIFNEYISLVEKYIEEQLLQRIPEFNMAAFITTLQHH

靶点信息

研究背景	ADP-ribosylation factor (ARF)-like proteins (ARLs) comprise a functionally distinct group of the ARF family of RAS-related GTPases. The protein encoded by this gene binds to ARL2.GTP with high affinity but does not interact with ARL2.GDP, activated ARF, or RHO proteins. The lack of detectable membrane association of this protein or ARL2 upon activation of ARL2 is suggestive of actions distinct from those of the ARFs. This protein is considered to be the first ARL2-specific effector identified, due to its interaction with ARL2.GTP but lack of ARL2 GTPase-activating protein activity.
------	--

基因ID	23568
基因名	ARL2BP
Swiss	Q9Y2Y0
别名	ARL2BP;BART;BART1;RP66

产品验证



Western blot analysis of ARL2BP expressed in U-251MG, MCF7 using ARL2BP Rabbit pAb at 1:1000. Secondary antibody: HRP Goat Anti-Rabbit IgG (H+L) at 1:5000. Lysates/proteins: 30ug per lane. Blocking buffer: 5% non-fat dry milk in TBST. Detection: ECL Enhanced Kit. Exposure time: 120s.

实验步骤

访问官网浏览详情: www.ablybio.cn