

CHRDL1 Rabbit pAb

货号: **AYP15430**

产品信息

反应	Human,Mouse
宿主	Rabbit
克隆性	Polyclonal
预测反应	
应用	WB
推荐浓度	WB: 1:500 - 1:2000
理论分子量	43kDa/51kDa/52kDa
实测分子量	51kDa
形式	Liquid
保存条件	Store at -20°C. Avoid freeze / thaw cycles. Buffer: PBS with 0.01% thiomersal,50% glycerol,pH7.3.
偶联物	Unconjugated
阳性对照	HeLa,mouse heart,mouse lung
细胞定位	Secreted
纯化	Affinity purification

抗原信息

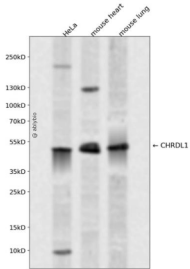
抗原信息	Recombinant fusion protein containing a sequence corresponding to amino acids 289-458 of human CHRDL1 (NP_001137453.1).
序列	CTCNVTKQECKKIHCPNRYPCYPQKIDGKCKKCPGKKAKEELPGQSF DNKGYFCGEETMPVYESVFMEDGETTRKIALE TERPPQVEVHVWTIRKGILQHFHIEKISKRMFEELPHFKLVTRTTLSQWKIFTEGEAQISQMCSRVCRTELEDLVKVLVLER SEKGHC

靶点信息

研究背景	This gene encodes an antagonist of bone morphogenetic protein 4. The encoded protein may play a role in topographic retinotectal projection and in the regulation of retinal angiogenesis in response to hypoxia. Alternatively spliced transcript variants encoding different isoforms have been described.
基因ID	91851

基因名	CHRDL1
Swiss	Q9BU40
别名	CHRDL1;CHL;MGC1;MGCN;NRLN1;VOPT;dA141H5.1

产品验证



Western blot analysis of CHRDL1 expressed in HeLa, mouse heart, mouse lung using CHRDL1 Rabbit pAb at 1:1000. Secondary antibody: HRP Goat Anti-Rabbit IgG (H+L) at 1:5000. Lysates/proteins: 30ug per lane. Blocking buffer: 5% non-fat dry milk in TBST. Detection: ECL Enhanced Kit. Exposure time: 120s.

实验步骤

访问官网浏览详情: www.ablybio.cn