

ATP1A4 Rabbit pAb

货号: **AYP15429**

产品信息

反应	Mouse,Rat
宿主	Rabbit
克隆性	Polyclonal
预测反应	
应用	WB
推荐浓度	WB: 1:200 - 1:2000
理论分子量	19kDa/114kDa
实测分子量	100kDa
形式	Liquid
保存条件	Store at -20°C. Avoid freeze / thaw cycles. Buffer: PBS with 0.01% thiomersal,50% glycerol,pH7.3.
偶联物	Unconjugated
阳性对照	Mouse testis,Mouse brain,Mouse kidney,Rat testis,Rat brain,Rat kidney
细胞定位	Cell membrane,Multi-pass membrane protein
纯化	Affinity purification

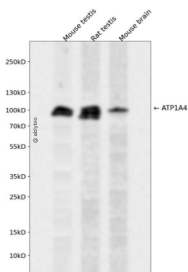
抗原信息

抗原信息	Recombinant fusion protein containing a sequence corresponding to amino acids 1-90 of human ATP1A4 (NP_653300.2).
序列	MGLWGKKGTVAPHDQSPRRRPKGLIKKKMVKREKQQRNMEELKKEVVMDDHKLTLLEELSTKYSVDLTKGSHQRAKEI LTRGGPNTVTP

靶点信息

研究背景	The protein encoded by this gene belongs to the family of P-type cation transport ATPases, and to the sub family of Na ⁺ /K ⁺ -ATPases. Na ⁺ /K ⁺ -ATPase is an integral membrane protein responsible for establishing and maintaining the electrochemical gradients of Na and K ions across the plasma membrane. These gradients are essential for osmoregulation, for sodium-coupled transport of a variety of organic and inorganic molecules, and for electrical excitability of nerve and muscle. This enzyme is composed of two subunits, a large catalytic subunit (alpha) and a smaller glycoprotein subunit (beta). The catalytic subunit of Na ⁺ /K ⁺ -ATPase is encoded by multiple genes. This gene encodes an alpha 4 subunit. Alternatively spliced transcript variants encoding different isoforms have been identified.
基因ID	480
基因名	ATP1A4
Swiss	Q13733
别名	ATP1A4;ATP1A1;ATP1AL2

产品验证



Western blot analysis of ATP1A4 expressed in Mouse testis, Rat testis, Mouse brain using ATP1A4 Rabbit pAb at 1:1000. Secondary antibody: HRP Goat Anti-Rabbit IgG (H+L) at 1:5000. Lysates/proteins: 30ug per lane. Blocking buffer: 5% non-fat dry milk in TBST. Detection: ECL Enhanced Kit. Exposure time: 12 0s.

实验步骤

访问官网浏览详情: www.ablybio.cn