

GTF2E1 Rabbit pAb

货号: **AYP15426**

产品信息

反应	Human,Mouse,Rat
宿主	Rabbit
克隆性	Polyclonal
预测反应	
应用	WB IHC IF/ICC
推荐浓度	WB: 1:200 - 1:2000 IHC: 1:50 - 1:200 IF/ICC: 1:50 - 1:200
理论分子量	49kDa
实测分子量	60kDa
形式	Liquid
保存条件	Store at -20°C. Avoid freeze / thaw cycles. Buffer: PBS with 0.01% thiomersal,50% glycerol,pH7.3.
偶联物	Unconjugated
阳性对照	HeLa,Jurkat,A-431,Mouse brain,Mouse spleen,Mouse testis
细胞定位	Nucleus
纯化	Affinity purification

抗原信息

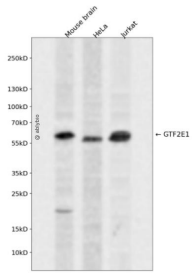
抗原信息	Recombinant fusion protein containing a sequence corresponding to amino acids 230-439 of human GTF2 E1 (NP_005504.2).
序列	LAGGHHREAWATKGPSYEDLYTQNVVINMDDQEDLHRASLEGKSAKERPIWLRESTVQGAYGSEDMKEGGIDMDAFQE REEGHAGPDDNEEVMRALLIHEKKTSSAMAGSVGAAAPVTAANGSDSESETSSESDDDSPPRPAAVAVHKREDEEEDDE FEEVADDPIVMVAGRPFYSYSEVSQRPELVAQMTPEEKEAYIAMGQRMFEDLFE

靶点信息

研究背景	Recruits TFIIH to the initiation complex and stimulates the RNA polymerase II C-terminal domain kinase and DNA-dependent ATPase activities of TFIIH. Both TFIIH and TFIE are required for promoter clearance by RNA polymerase.
------	---

基因ID	2960
基因名	GTF2E1
Swiss	P29083
别名	GTF2E1;FE;TF2E1;TFIIE-A

产品验证



Western blot analysis of GTF2E1 expressed in Mouse brain, HeLa, Jurkat using GTF2E1 Rabbit pAb at 1:1000. Secondary antibody: HRP Goat Anti-Rabbit IgG (H+L) at 1:5000. Lysates/proteins: 30ug per lane. Blocking buffer: 5% non-fat dry milk in TBST. Detection: ECL Enhanced Kit. Exposure time: 120s.

实验步骤

访问官网浏览详情: www.ablybio.cn