

MYF6 Rabbit pAb

货号: **AYP15424**

产品信息

反应	Human,Mouse,Rat
宿主	Rabbit
克隆性	Polyclonal
预测反应	
应用	WB
推荐浓度	WB: 1:200 - 1:2000
理论分子量	26kDa
实测分子量	27kDa
形式	Liquid
保存条件	Store at -20°C. Avoid freeze / thaw cycles. Buffer: PBS with 0.01% thiomersal,50% glycerol,pH7.3.
偶联物	Unconjugated
阳性对照	HepG2,Mouse skeletal muscle,Mouse spleen,Rat skeletal muscle
细胞定位	Nucleus
纯化	Affinity purification

抗原信息

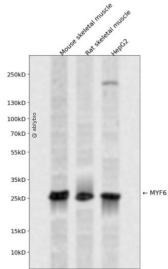
抗原信息	Recombinant fusion protein containing a sequence corresponding to amino acids 80-180 of human MYF6 (NP_002460.1).
序列	WACKTCKRKSAPTDRRKAATLRERRRLKKINEAFEALKRRRTVANPNQRLPKVEILRSAISYIERLQDLLHRLDQQEKMQELG VDPFSYRPKQENLEGADFL

靶点信息

研究背景	The protein encoded by this gene is a probable basic helix-loop-helix (bHLH) DNA binding protein involved in muscle differentiation. The encoded protein likely acts as a heterodimer with another bHLH protein. Defects in this gene are a cause of autosomal dominant centronuclear myopathy (ADCNM).
基因ID	4618

基因名	MYF6
Swiss	P23409
别名	MYF6;CNM3;MRF4;bHLHc4;myf-6

产品验证



Western blot analysis of MYF6 expressed in Mouse skeletal muscle, Rat skeletal muscle, HepG2 using MYF6 Rabbit pAb at 1:1000. Secondary antibody: HRP Goat Anti-Rabbit IgG (H+L) at 1:5000. Lysates/proteins : 30ug per lane. Blocking buffer: 5% non-fat dry milk in TBST. Detection: ECL Enhanced Kit. Exposure time: 120s.

实验步骤

访问官网浏览详情: www.ablybio.cn