

SERPINB4 Rabbit pAb

货号: **AYP15423**

产品信息

反应	Mouse,Rat
宿主	Rabbit
克隆性	Polyclonal
预测反应	
应用	WB
推荐浓度	WB: 1:500 - 1:1000
理论分子量	44kDa
实测分子量	45KDa
形式	Liquid
保存条件	Store at -20°C. Avoid freeze / thaw cycles. Buffer: PBS with 0.01% thiomersal,50% glycerol,pH7.3.
偶联物	Unconjugated
阳性对照	Mouse skin
细胞定位	Cytoplasm
纯化	Affinity purification

抗原信息

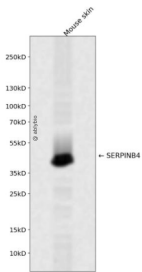
抗原信息	A synthetic peptide corresponding to a sequence within amino acids 300 to the C-terminus of human SERPINB4 (NP_002965.1).
序列	RTMGMVNI FNGDADLSGMTWSHGLSVSKVLHKAFVEVTEEGVEAAAATAVVVVVELSSPSTNEEFCCNHPFLFFIRQNKTN SILFYGRFSSP

靶点信息

研究背景	The protein encoded by this gene is a member of the serpin family of serine protease inhibitors. The encoded protein is highly expressed in many tumor cells and can inactivate granzyme M, an enzyme that kills tumor cells. This protein, along with serpin B3, can be processed into smaller fragments that aggregate to form an autoantigen in psoriasis, probably by causing chronic inflammation.
基因ID	6318

基因名	SERPINB4
Swiss	P48594
别名	SERPINB4;LEUPIN;PI11;SCCA-2;SCCA1;SCCA2;serpin B4

产品验证



Western blot analysis of SERPINB4 expressed in Mouse skin using SERPINB4 Rabbit pAb at 1:1000. Secondary antibody: HRP Goat Anti-Rabbit IgG (H+L) at 1:5000. Lysates/proteins: 30ug per lane. Blocking buffer: 5% non-fat dry milk in TBST. Detection: ECL Enhanced Kit. Exposure time: 120s.

实验步骤

访问官网浏览详情: www.ablybio.cn